

# FloppyFlex® F21 B

RED / GREEN / BLUE / YELLOW / AMBER  
ORANGE / PINK / PURPLE / WHITE

SINGLE COLOUR DIMMABLE LED NEON



**FIREFLY LIGHTING**

Phone : +61 7 3254 4333

Email : sales@fireflylighting.com.au

Address : 9/29 Links Ave North, Eagle Farm.

Brisbane QLD 4009 Australia

[www.fireflylighting.com.au](http://www.fireflylighting.com.au)



24V EXTRA  
LOW VOLTAGE



INDOOR  
OUTDOOR



UV  
STABILISED



OUTDOOR  
IP RATED



COMMERCIAL  
GRADE



VANDAL  
RESISTANT



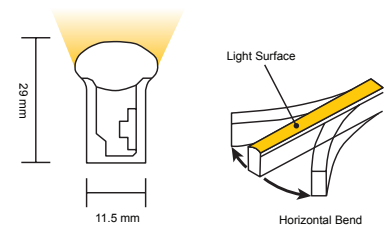
GREEN  
FRIENDLY



PVC  
3 YEAR  
WARRANTY



SILICONE  
5 YEAR  
WARRANTY



FloppyFlex F21B features a large single colour flexible 24V LED neon available in different colours or colour temperatures of white. The minimum horizontal bend diameter is 120 mm. Features a homogenous LED surface without “skittles” effect.

**CONTENTS**

**P2** LED Specifications

**P7** Connectors

**P10** Mini Tool Kit

**P11** Drivers

**P12** Aluminium Profiles

**FEATURES**

Super bright with homogenous lighting surface

Smooth, beautiful dimming, DMX control via FloppyDrive

Wide beam angle

Wide range of accessories for joining, terminating, mounting, powering

Easy to use and install

Tight 120 mm horizontal bend

Unlimited and unprecedented possibilities

**APPLICATIONS**

Installation, architectural, digital signage, gameshows, arcades, signs, film and television sets, theme parks, bars and clubs, cruise ships, creating words, indirect applications, and scenic elements

**AVAILABLE CONNECTORS**

**Injection Molded** Power Feed and End cap connectors, fully customizable for no-hassle installations. PVC IP67, Silicone IP68.

**Double Molded** IP68 Power Feed and End cap connectors, suitable for submersible applications. PVC only - not available for silicone versions.

**Sanp Connector** power feeds and end caps allow for easy onsite terminations with IP67 ratings, and allow for the End, Side, Middle, or Bottom power feed entry.

**RESISTANCE AND PROTECTIONS**

Flame Resistant  
UV Resistant  
Solvents Resistant  
Saltwater Resistant  
IP67 Protection  
IK08 Protection

**CERTIFICATIONS**

With factory-installed connectors. cULus Listed, CE, TUV and RoHS compliant and passes rigorous environmental, optical, mechanical, and electrical testing.



# FloppyFlex® F21 B

## WHITE PVC

### DOMED PROFILE LED NEON



**FIREFLY LIGHTING**

Phone : +61 7 3254 4333

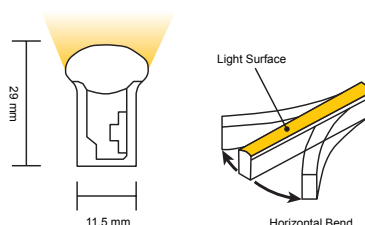
Email : sales@fireflylighting.com.au

Address : 9/29 Links Ave North, Eagle Farm.  
Brisbane QLD 4009 Australia

[www.fireflylighting.com.au](http://www.fireflylighting.com.au)

**F21 White PVC Specifications**

Part Number	LN-F21B-21	LN-F21B-27	LN-F21B-30	LN-F21B-35	LN-F21B-40	LN-F21B-57
Type	Dimmable Fixed White					
LED Colour	<b>2100K</b>	<b>2700K</b>	<b>3000K</b>	<b>3500K</b>	<b>4000K</b>	<b>5700K</b>
CCT	2238±102K	2725±145K	3045±175K	3465±245K	3985±275K	5669±355K
Lumen/m	350	440	440	440	440	440
CRI	82-87					
Beam Angle, Average (50%)	172.1°					
Cut & Connect Unit Length	83.34 mm					
Number of Units Per Meter	12					
LED Quantity Per Unit	6					
LED Quantity Per Meter	72					
Base Colour	White					
Housing	PVC					
Minimum Bend Diameter	120 mm					
Bending Direction	Horizontal Bend					
Connectors & Hardware	Factory molded connectors / Field attachable connectors / Aluminium mounting channels					
Operating Voltage	24V DC					
Wiring	2-Wire					
Power Consumption	12 W/m					
Max Fixture Runs	Single end feed	10 m				
	Double end feed	20 m				
Control	DMX-512/Ethernet via ProPlex BuckBoost System, DMX-512 via FloppyDrive 2X2, or DMX decoder, Dimmable PWM LED Driver, Non-dimmable DC LED Driver					
Installation Temperature	0 to 45 °C					
Operating Temperature	-20 to 45 °C					
Mounting Surface Temperature	60 °C Max.					
Storage Temperature	-20 to 60 °C					
Dimensions (WxHxD)	11.5 mm x 29 mm x variable					
Ingress Protection	IP67 with Molded connectors, IP68 with Double Molded connectors, IP67 with Snap Connectors					
Listing	UL2108 Class 2, UL2108 Non Class 2, CE-EMC, IS 10322					
Warranty	3 Years					
Wire Legend						



# FloppyFlex® F21 B

## WHITE SILICONE

### DOMED PROFILE LED NEON



**FIREFLY LIGHTING**

Phone : +61 7 3254 4333

Email : sales@fireflylighting.com.au

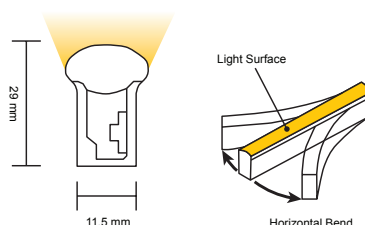
Address : 9/29 Links Ave North, Eagle Farm.

Brisbane QLD 4009 Australia

[www.fireflylighting.com.au](http://www.fireflylighting.com.au)

**F21 White Silicone Specifications**

Part Number	SLN-F21B-21	SLN-F21B-27	SLN-F21B-30	SLN-F21B-35	SLN-F21B-40	SLN-F21B-57
Type	Dimmable Fixed White					
LED Colour	<b>2100K</b>	<b>2700K</b>	<b>3000K</b>	<b>3500K</b>	<b>4000K</b>	<b>5700K</b>
CCT	2238±66K	2725±85K	3045±105K	3465±245K	3985±150K	5669±305K
Lumen/m	380	470	470	470	470	470
CRI	82-87					
Beam Angle, Average (50%)	141.9°					
Cut & Connect Unit Length	83.34 mm					
Number of Units Per Meter	12					
LED Quantity Per Unit	6					
LED Quantity Per Meter	72					
Base Colour	White					
Housing	Silicone					
Minimum Bend Diameter	120 mm					
Bending Direction	Horizontal Bend					
Connectors & Hardware	Factory molded connectors / Field attachable connectors / Aluminium mounting channels					
Operating Voltage	24V DC					
Wiring	2-Wire					
Power Consumption	12 W/m					
Max Fixture Runs	Single end feed	15 m				
	Double end feed	30 m				
Control	DMX-512/Ethernet via ProPlex BuckBoost System, DMX-512 via FloppyDrive 2X2, or DMX decoder, Dimmable PWM LED Driver, Non-dimmable DC LED Driver					
Installation Temperature	-40 to 50 °C					
Operating Temperature	-40 to 55 °C					
Mounting Surface Temperature	85 °C Max.					
Storage Temperature	-40 to 60 °C					
Dimensions (WxHxD)	11.5 mm x 29 mm x variable					
Ingress Protection	IP68 with Molded connectors, IP67 with Quick Connect connectors					
Listing	UL2108 Class 2, CE-EMC, IS 10322					
Warranty	5 Years					
Wire Legend						



# FloppyFlex® F21 B

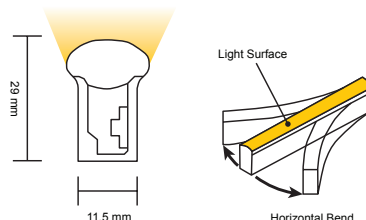
## WHITE NICHIA PVC DOMED PROFILE LED NEON



**FIREFLY LIGHTING**  
 Phone : +61 7 3254 4333  
 Email : sales@fireflylighting.com.au  
 Address : 9/29 Links Ave North, Eagle Farm.  
 Brisbane QLD 4009 Australia  
[www.fireflylighting.com.au](http://www.fireflylighting.com.au)

**F21 White Nichia LED PVC Specifications**

Part Number	LN-F21B-25N	LN-F21B-27N	LN-F21B-30N	LN-F21B-35N	LN-F21B-40N	LN-F21B-45N	LN-F21B-50N
Type	Dimmable Fixed White						
LED Colour	<b>2500K</b>	<b>2700K</b>	<b>3000K</b>	<b>3500K</b>	<b>4000K</b>	<b>4500K</b>	<b>5000K</b>
CCT	2460±120K	2725±145K	3045±175K	3465±245K	3985±275K	4503±243K	5029±283K
Lumen/m	340	340	340	380	380	380	380
CRI	81-88						
Beam Angle, Average (50%)	162.7°						
Cut & Connect Unit Length	100 mm						
Number of Units Per Meter	10						
LED Quantity Per Unit	6						
LED Quantity Per Meter	60						
Base Colour	White						
Housing	PVC						
Minimum Bend Diameter	120 mm						
Bending Direction	Horizontal Bend						
Connectors & Hardware	Factory molded connectors / Field attachable connectors / Aluminium mounting channels						
Operating Voltage	24V DC						
Wiring	2-Wire						
Power Consumption	12 W/m						
Max Fixture Runs	Single end feed	10 m					
	Double end feed	20 m					
Control	DMX-512/Ethernet via ProPlex BuckBoost System, DMX-512 via FloppyDrive 2X2, or DMX decoder, Dimmable PWM LED Driver, Non-dimmable DC LED Driver						
Installation Temperature	0 to 45 °C						
Operating Temperature	-20 to 45 °C						
Mounting Surface Temperature	60 °C Max.						
Storage Temperature	-20 to 60 °C						
Dimensions (WxHxD)	11.5 mm x 29 mm x variable						
Ingress Protection	IP67 with Molded connectors, IP68 with Double Molded connectors, IP67 with Quick Connect connectors						
Listing	UL2108 Class 2, UL2108 Non Class 2, CE-EMC, IS 10322						
Warranty	3 Years						
Wire Legend							



# FloppyFlex® F21 B

## SINGLE COLOUR PVC DOMED PROFILE LED NEON



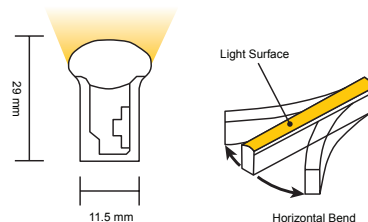
**FIREFLY LIGHTING**  
 Phone : +61 7 3254 4333  
 Email : sales@fireflylighting.com.au  
 Address : 9/29 Links Ave North, Eagle Farm.  
 Brisbane QLD 4009 Australia  
[www.fireflylighting.com.au](http://www.fireflylighting.com.au)

**F21 Colour PVC Specifications**

Part Number	LN-F21B-R	LN-F21B-G	LN-F21B-B	LN-F21B-Y	LN-F21B-O	LN-F21B-P	LN-F21B-PP
Type	Dimmable Fixed Colour						
LED Colour	Red	Green	Blue	Yellow	Orange	Pink	Purple
Wavelength	618-624nm	522-528nm	468-474nm	578-582nm	600-606nm	TBA	TBA
Lumen/m	80	180	25	260	180	TBA	TBA
Beam Angle, Average (50%)	147.7°						
Cut & Connect Unit Length	125 mm	83.34 mm				100 mm	
Number of Units Per Meter	8	12				TBA	TBA
LED Quantity Per Unit	9	6				TBA	TBA
LED Quantity Per Meter	72	72				TBA	TBA
Base Colour*	Pantone #1797C	Pantone #3278C	Pantone #302C	Pantone #4535C	Pantone #7410C	TBA	TBA
Housing	PVC						
Minimum Bend Diameter	120 mm						
Bending Direction	Horizontal Bend						
Connectors & Hardware	Factory molded connectors / Field attachable connectors / Aluminium mounting channels						
Operating Voltage	24 VDC						
Wiring	2-Wire						
Power Consumption	8 W/m	12 W/m				9 W/m	6 W/m
Max Fixture Runs	Single end feed	15 m	10 m			TBA	TBA
	Double end feed	30 m	20 m			TBA	TBA
Control	DMX-512/Ethernet via ProPlex BuckBoost System, DMX-512 via FloppyDrive 2X2, or DMX decoder, Dimmable PWM LED Driver, Non-dimmable DC LED Driver						
Installation Temperature	0 to 45 °C						
Operating Temperature	-20 to 50 °C	-20 to 45 °C				TBA	TBA
Mounting Surface Temperature	60 °C Max.				TBA	TBA	
Storage Temperature	-20 to 60 °C				TBA	TBA	
Dimensions (WxHxD)	11.5 mm x 29 mm x variable						
Ingress Protection	IP67 with Molded connectors, IP68 with Double Molded connectors, IP67 with Quick Connect connectors						
Listing	UL2108 Class 2, UL2108 Non Class 2, CE-EMC, IS 10322						
Warranty	3 Years						

\* Actual colour may vary slightly due to processing variations. Custom colours by special request.

Wire Legend



# FloppyFlex® F21 B

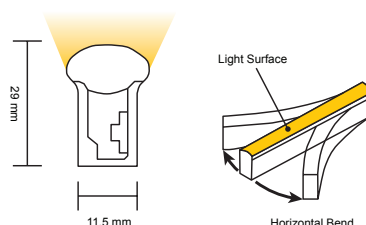
## SINGLE COLOUR SILICONE DOMED PROFILE LED NEON



**FIREFLY LIGHTING**  
 Phone : +61 7 3254 4333  
 Email : sales@fireflylighting.com.au  
 Address : 9/29 Links Ave North, Eagle Farm.  
 Brisbane QLD 4009 Australia  
[www.fireflylighting.com.au](http://www.fireflylighting.com.au)

### F21 Colour Silicone Specifications

Part Number	SLN-F21B-R	SLN-F21B-A	SLN-F21B-G	SLN-F21B-B
Type	Dimmable Fixed Colour			
LED Colour	Red	Amber	Green	Blue
Wavelength	618-624nm	588-594nm	522-528nm	468-474nm
Lumen/m	140	140	113	24
Beam Angle, Average (50%)	152.4°			
Cut & Connect Unit Length	125 mm		83.34 mm	
Number of Units Per Meter	8		12	
LED Quantity Per Unit	9		6	
LED Quantity Per Meter	72		72	
Base Colour	White			
Housing	Silicone			
Minimum Bend Diameter	120 mm			
Bending Direction	Horizontal Bend			
Connectors & Hardware	Factory molded connectors / Field attachable connectors / Aluminium mounting channels			
Operating Voltage	24V DC			
Wiring	2-Wire			
Power Consumption	8 W/m		12 W/m	
Max Fixture Runs	Single end feed	20 m	15 m	
	Double end feed	40 m	30 m	
Control	DMX-512/Ethernet via ProPlex BuckBoost System, DMX-512 via FloppyDrive 2X2, or DMX decoder, Dimmable PWM LED Driver, Non-dimmable DC LED Driver			
Installation Temperature	-40 to 50 °C			
Operating Temperature	-40 to 60 °C		-40 to 55 °C	
Mounting Surface Temperature	85 °C Max.			
Storage Temperature	-40 to 60 °C			
Dimensions (WxHxD)	11.5 mm x 29 mm x variable			
Ingress Protection	IP68 with Molded connectors, IP67 with Quick Connect connectors			
Listing	UL2108 Class 2, CE-EMC, IS 10322			
Warranty	5 Years			
Wire Legend				



# FloppyFlex® F21 B

**FACTORY MOLDED F21 CONNECTORS**  
IP67 PVC OR IP68 SILICONE

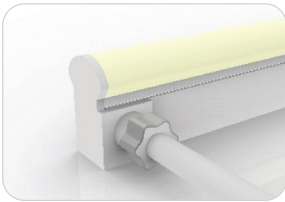
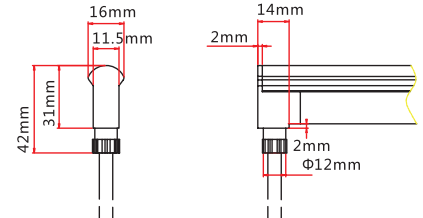


**FIREFLY LIGHTING**  
Phone : +61 7 3254 4333  
Email : sales@fireflylighting.com.au  
Address : 9/29 Links Ave North, Eagle Farm.  
Brisbane QLD 4009 Australia  
[www.fireflylighting.com.au](http://www.fireflylighting.com.au)



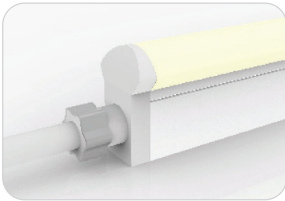
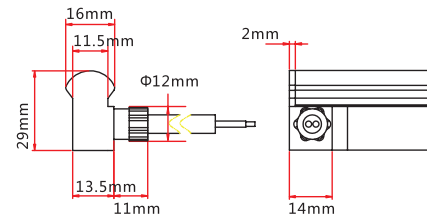
### Molded Bottom Entry Connection

Connects FloppyFlex F21 to power supply with pre-installed bottom feed cable, IP67.  
Cable length available in 0.3 m, 1 m, 3 m, 5 m, 10 m.



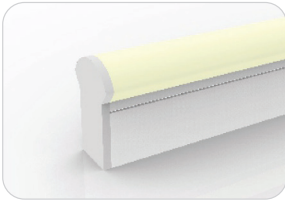
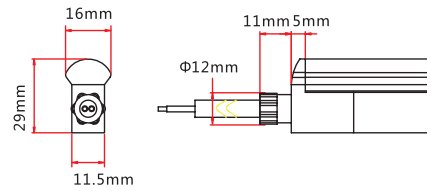
### Molded Side Entry Connection

Connects FloppyFlex F21 to power supply with pre-installed side feed cable, IP67.  
Cable length available in 0.3 m, 1 m, 3 m, 5 m, 10 m.



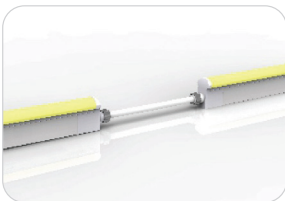
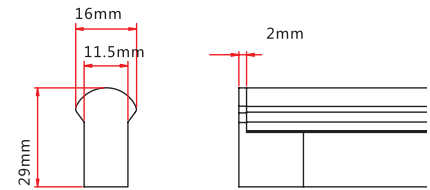
### Molded End Entry Connection

Connects FloppyFlex F21 to power supply with pre-installed end feed cable, IP67.  
Cable length available in 0.3 m, 1 m, 3 m, 5 m, 10 m.



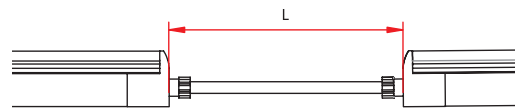
### Molded End Cap

Pre-installed termination protection of FloppyFlex F21, IP67.



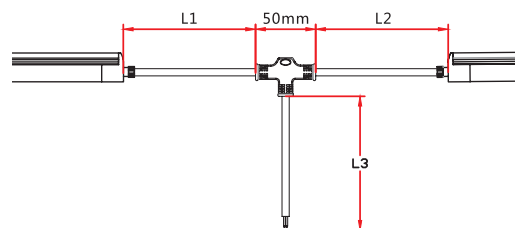
### Molded End Entry Connection

Connects two pieces of FloppyFlex F21 together with a flexible cable, IP67.  
Cable length available in 0.3 - 1 m.  
Maximum 8 jumpers per 20 m  
Maximum 4 jumpers per 10 m



### Molded T-Feed Connection

Connects two pieces of FloppyFlex F21 together with powered T-joint, IP67.  
L1 and L2 length available in 0.15-0.5 m.  
L3 length available in 0.3 - 1 m  
Maximum 8 T-Feeds per 20 m  
Maximum 4 T-Feeds per 10 m



# FloppyFlex® F21 B

## FACTORY DOUBLE MOLDED F21 CONNECTORS IP68 PVC ONLY



**FIREFLY LIGHTING**

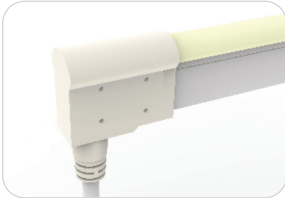
Phone : +61 7 3254 4333

Email : sales@fireflylighting.com.au

Address : 9/29 Links Ave North, Eagle Farm.

Brisbane QLD 4009 Australia

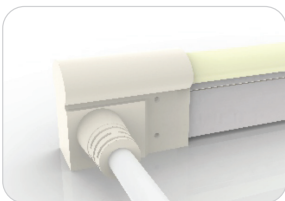
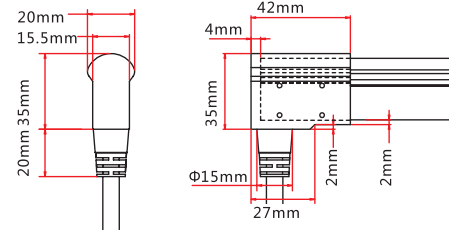
[www.fireflylighting.com.au](http://www.fireflylighting.com.au)



### Double-Molded Bottom Entry Connection

Connects FloppyFlex F21 to power supply with pre-installed end feed cable, IP68.

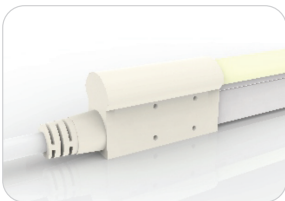
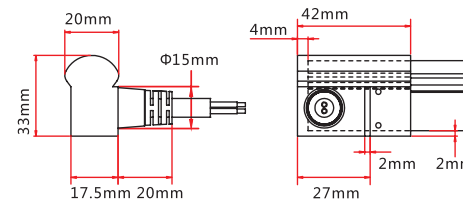
Cable length available in 0.3 m, 1 m, 3 m, 5 m, 10 m.



### Double-Molded Side Entry Connection

Connects FloppyFlex F21 to power supply with pre-installed side feed cable, IP68.

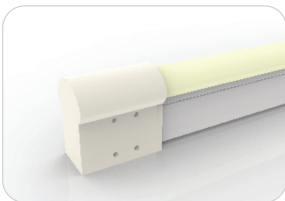
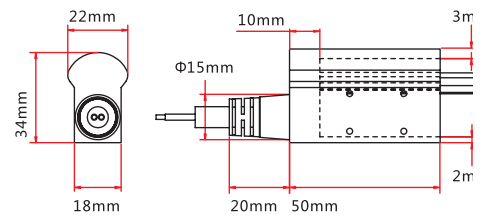
Cable length available in 0.3 m, 1 m, 3 m, 5 m, 10 m.



### Double-Molded End Entry Connection

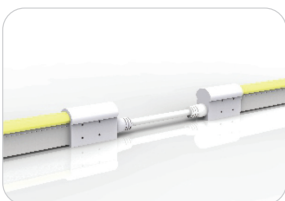
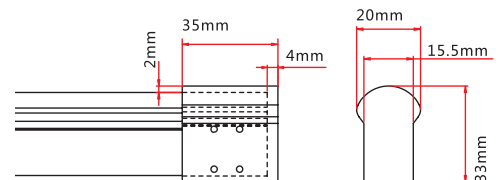
Connects FloppyFlex F21 to power supply with pre-installed end feed cable, IP68.

Cable length available in 0.3 m, 1 m, 3 m, 5 m, 10 m.



### Double-Molded End Cap

Pre-installed termination protection of FloppyFlex F21, IP68.



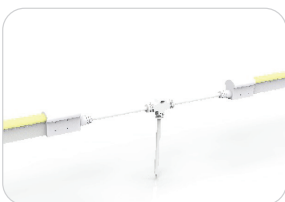
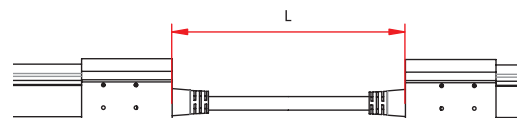
### Double-Molded End Entry Connection

Connects two pieces of FloppyFlex F21 together with a flexible cable, IP68.

Cable length available in 0.3 - 1 m.

Maximum 8 jumpers per 20 m

Maximum 4 jumpers per 10 m



### Double-Molded T-Feed Connection

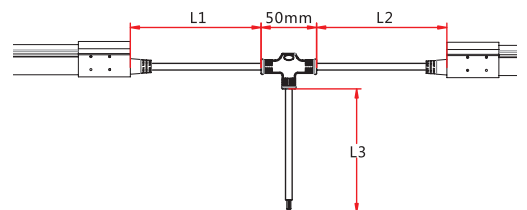
Connects two pieces of FloppyFlex F21 together with powered T-joint, IP68.

L1 and L2 length available in 0.15-0.5 m.

L3 length available in 0.3 - 1 m

Maximum 8 T-Feeds per 20 m

Maximum 4 T-Feeds per 10 m





# FloppyFlex® F21 B

## SNAP CONNECT F21 CONNECTORS IP67 PVC OR SILICONE

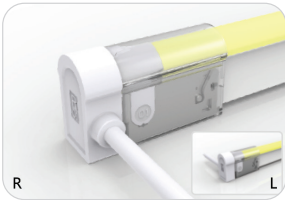
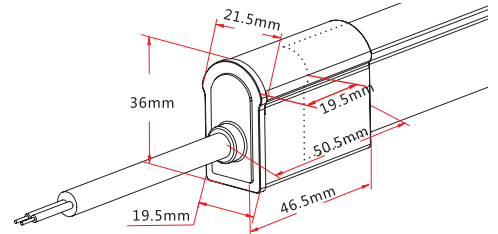


**FIREFLY LIGHTING**  
 Phone : +61 7 3254 4333  
 Email : sales@fireflylighting.com.au  
 Address : 9/29 Links Ave North, Eagle Farm.  
 Brisbane QLD 4009 Australia  
[www.fireflylighting.com.au](http://www.fireflylighting.com.au)



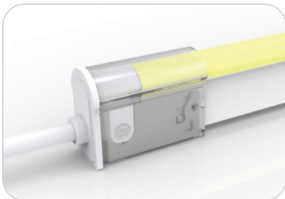
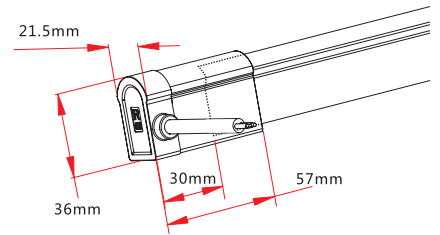
### Snap Connect Bottom Entry

Connects FloppyFlex F21 to power supply with user-installable end feed cable, IP67. Cable length available in 0.3 m, 1 m, 3 m, 5 m, 10 m.



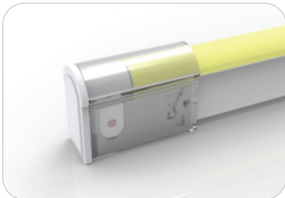
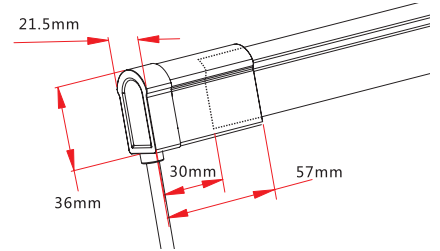
### Snap Connect Side Entry

Connects FloppyFlex F21 to power supply with user-installable side feed cable, IP67. Cable length available in 0.3 m, 1 m, 3 m, 5 m, 10 m.



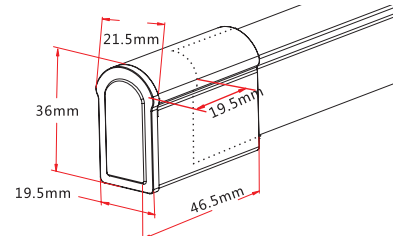
### Snap Connect End Entry

Connects FloppyFlex F21 to power supply with user-installable end feed cable, IP67. Cable length available in 0.3 m, 1 m, 3 m, 5 m, 10 m.



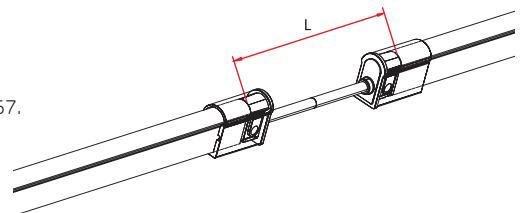
### Snap Connect End Cap

User-installable termination protection of FloppyFlex F21, IP67.



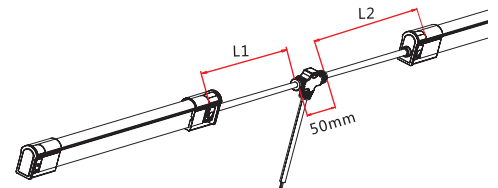
### Snap Connect End Entry

Connects two pieces of FloppyFlex F21 together with a flexible cable, user-installable, IP67. Cable length available in 0.3 m, 1 m, and 3 m.



### Snap Connect T-Feed

Connects two pieces of FloppyFlex F21 together with powered T-joint, user-installable, IP67. L1 and L2 length available in 0.3 m. L3 length available in 1 m



# FloppyFlex® F21 B

## MINI TOOL KIT ASSEMBLY TOOLS



**FIREFLY LIGHTING**  
Phone : +61 7 3254 4333  
Email : sales@fireflylighting.com.au  
Address : 9/29 Links Ave North, Eagle Farm.  
Brisbane QLD 4009 Australia  
[www.fireflylighting.com.au](http://www.fireflylighting.com.au)

### Mini Tool Kit

The FloppyFlex Mini Tool Kit includes the tools needed to properly cut and terminate FloppyFlex LED Neon with Snap Connect field-installable connectors. Correct installation ensures proper electrical contact, IP rating integrity, and warranty compliance.

Includes cutter, insertion spreader and grippers.

We recommend using these tools for optimum installation results and reduced risk of damage to the product.



# FloppyFlex® F21 B

## DRIVERS



**FIREFLY LIGHTING**  
 Phone : +61 7 3254 4333  
 Email : sales@fireflylighting.com.au  
 Address : 9/29 Links Ave North, Eagle Farm.  
 Brisbane QLD 4009 Australia  
[www.fireflylighting.com.au](http://www.fireflylighting.com.au)

### L-TECH 4 channel DMX Decoder

- DMX dimming for 24V LED Tapes, Neons, and other low voltage systems of all types. Perfect for FloppyFlex
- One 24V 5-wire output
- Addressing via RDM or built in DIP switches
- Pluggable Terminal Block (PTB) screw terminals for bare-wire, installation flexibility
- Realises 0-100% dimming or different lighting effects.
- Works with DIM, CT, RGB, RGBW LEDs
- Can control 4 individual neon lengths.



### L-TECH 3 channel DMX Decoder

- DMX dimming for 24V LED Tapes, Neons, and other low voltage systems of all types. Perfect for FloppyFlex
- One 24V 4-wire output
- Addressing via RDM or built in DIP switches
- Pluggable Terminal Block (PTB) screw terminals for bare-wire, installation flexibility
- Realises 0-100% dimming or different lighting effects.
- Works with DIM, CT, RGB LEDs
- Can control 3 individual neon lengths.



### Mean Well 24 VDC LED Drivers

- High efficiency 24VDC LED drivers in DIN Rail and stand-alone with multiple wattage configurations
- IP-rated units available
- Fixed or dimmable output. Dimming available via 1-10VDC, 10V PWM signal, resistance, or built-in potentiometer



# FloppyFlex® F21 B

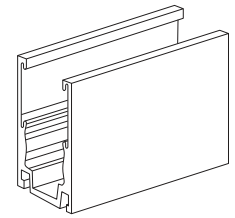
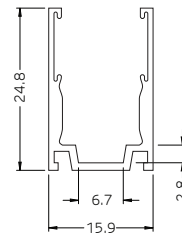
## STRAIGHT ALUMINIUM CHANNEL



**FIREFLY LIGHTING**  
 Phone : +61 7 3254 4333  
 Email : sales@fireflylighting.com.au  
 Address : 9/29 Links Ave North, Eagle Farm.  
 Brisbane QLD 4009 Australia  
[www.fireflylighting.com.au](http://www.fireflylighting.com.au)

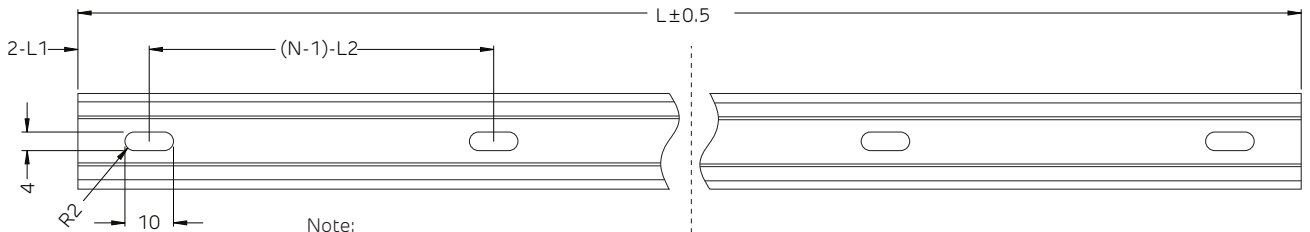
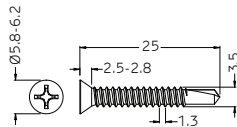


Versatile self-locking profile can be used to mount FloppyFlex F21 or F15 LED neon in any orientation including overhead at any angle. Extruded 6063 aluminium construction with elastic serrated grip tape hold the FloppyFlex neon firmly through varying temperatures of -20 to +70 °C.



Tolerance: ±0.2 mm

Dimensions in millimeters



Note:

1. 2-L1 refers to two of symmetric L1 in each piece of profile.
  2. (N-1)-L2 refers to (N minus one) of symmetric L2 in each piece of profile.
- "N" hereby stands for its corresponding "Hole Number" in the table below.

Part Number	Length	L1	L2	Slotted Hole	Number of Holes
LNCH-F21-AC	20 mm	10 mm	N/A	4x10 mm	1
LNCH-F21-A1-05	500 mm	50 mm	200 mm	4x10 mm	3
LNCH-F21-A1-1	1000 mm	100 mm	200 mm	4x10 mm	5
LNCH-F21-A1-2	2000 mm	100 mm	200 mm	4x10 mm	10



# FloppyFlex® F21 B

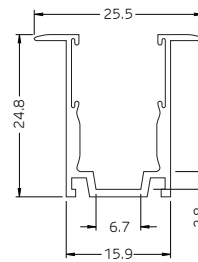
## FLANGE ALUMINIUM PROFILE



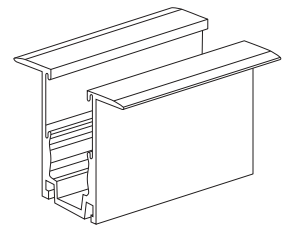
**FIREFLY LIGHTING**  
 Phone : +61 7 3254 4333  
 Email : sales@fireflylighting.com.au  
 Address : 9/29 Links Ave North, Eagle Farm.  
 Brisbane QLD 4009 Australia  
[www.fireflylighting.com.au](http://www.fireflylighting.com.au)



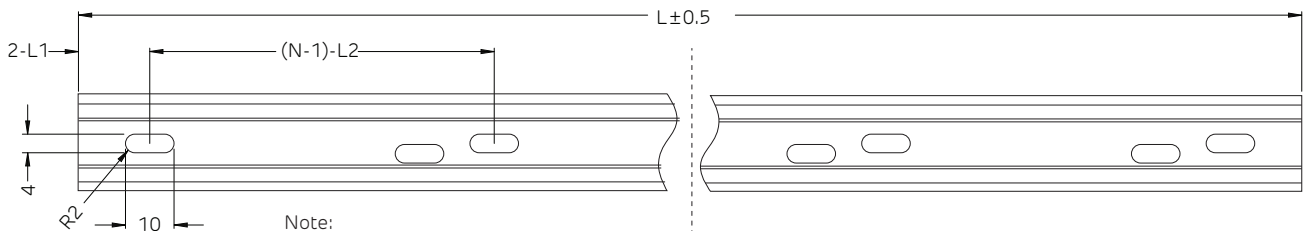
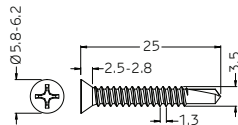
Versatile self-locking profile can be used to mount recessed FloppyFlex F21 or F15 LED neon in any orientation including overhead at any angle. Extruded 6063 aluminum construction with elastic serrated grip tape hold the FloppyFlex neon firmly through varying temperatures of -20 to +70°C.



Tolerance: ±0.2 mm



Dimensions in millimeters



Note:

1. 2-L1 refers to two of symmetric L1 in each piece of profile.
  2. (N-1)-L2 refers to (N minus one) of symmetric L2 in each piece of profile.
- "N" hereby stands for its corresponding "Hole Number" in the table below.

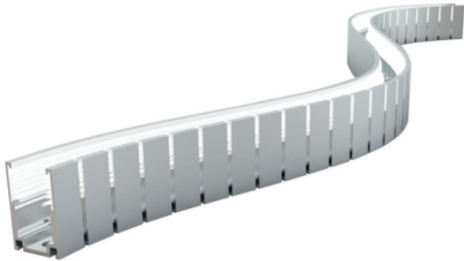
Part Number	Length	L1	L2	Slotted Hole	Number of Holes
LNCH-F21-A3-20	20 mm	10 mm	N/A	4x10 mm	1
LNCH-F21-A3-05	500 mm	50 mm	200 mm	4x10 mm	3
LNCH-F21-A3-1	1000 mm	100 mm	200 mm	4x10 mm	5

# FloppyFlex<sup>®</sup> F21 B

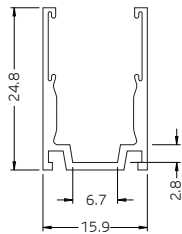
## BENDABLE ALUMINIUM PROFILE



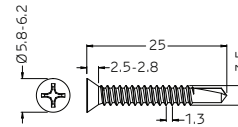
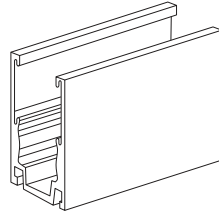
**FIREFLY LIGHTING**  
 Phone : +61 7 3254 4333  
 Email : sales@fireflylighting.com.au  
 Address : 9/29 Links Ave North, Eagle Farm.  
 Brisbane QLD 4009 Australia  
[www.fireflylighting.com.au](http://www.fireflylighting.com.au)



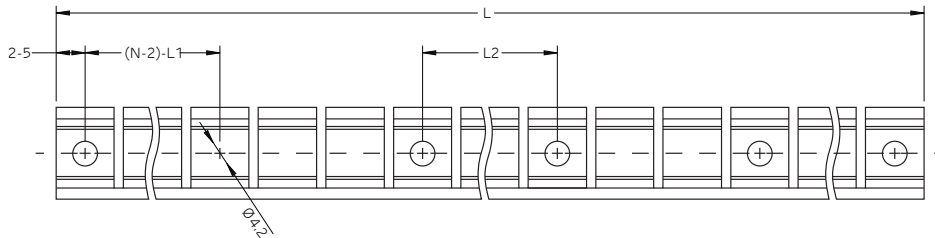
Flexible self-locking profile can be used to mount FloppyFlex F21 or F15 LED neon in custom freeform curves while maintaining clamping force. May be mounted in any orientation including overhead at any angle.



Tolerance: ±0.2 mm



Dimensions in millimeters



**Note:**

1. 2-5 refers to two of symmetric 5mm in each piece of profile.
  2. (N-2)·L1 refers to (N minus two) of symmetric L1 in each piece of profile.
- "N" hereby stands for its corresponding "Hole Number" in the table below.

Part Number	Length	L1	L2	Screw Hole	Number of Holes
LNCH-F21-A2-05	500 mm	116.5 mm	23.3 mm	Ø4.2 mm	6
LNCH-F21-A2-1	1000 mm	116.5 mm	58.2 mm	Ø4.2 mm	10

