

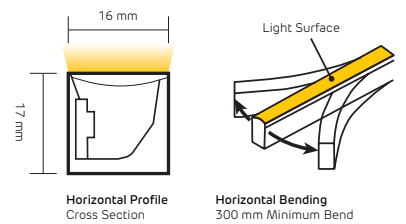
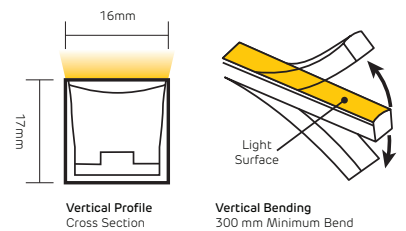
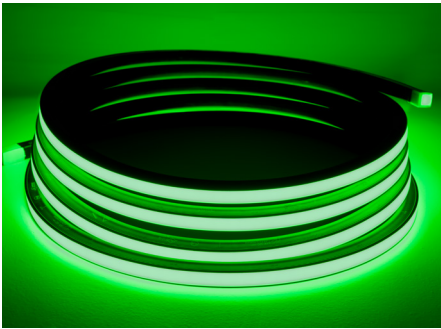
FloppyFlex® F22 B

SINGLE COLOUR - VERTICAL & HORIZONTAL BENDING LED NEON



FIREFLY LIGHTING
 Phone : +61 7 3254 4333
 Email : sales@fireflylighting.com.au
 Address : 9/29 Links Ave North, Eagle Farm.
 Brisbane QLD 4009 Australia
www.fireflylighting.com.au

- 
 24V EXTRA
LOW VOLTAGE
- 
 INDOOR
OUTDOOR
- 
 UV
STABILISED
- 
 OUTDOOR
IP RATED
- 
 COMMERCIAL
GRADE
- 
 VANDAL
RESISTANT
- 
 GREEN
FRIENDLY
- 
 3 YEAR
WARRANTY
- 
 5 YEAR
WARRANTY



FloppyFlex F22-B is a flexible 24V LED neon available in several colours or colour temperatures of white. The minimum Vertical & Horizontal Bend diameter is 300 mm. Features a homogenous LED surface without "skittles" effect.

FEATURES

- Super bright with homogenous lighting surface
- Smooth, beautiful dimming, DMX control via FloppyDrive or DMX decoder
- Wide beam angle
- Wide range of accessories for joining, terminating, mounting, powering
- Easy to use and install
- 300 mm minimum Horizontal or Vertical bend diameter
- Unlimited and unprecedented possibilities

APPLICATIONS

Installation, architectural, digital signage, gameshows, arcades, signs, film and television sets, theme parks, bars and clubs, cruise ships, creating words, indirect applications, and scenic elements

AVAILABLE CONNECTORS

Injection Molded Power Feed and End cap connectors, fully customizable for no-hassle installations. PVC IP67, Silicone IP68.

Double Molded IP68 Power Feed and End cap connectors, suitable for submersible applications. PVC only - not available for silicone versions.

Snap Connector power feeds and end caps allow for easy onsite terminations with IP67 ratings, and allow for the End, Side, Middle, or Bottom power feed entry.

RESISTANCE AND PROTECTIONS

- Flame Resistant
- UV Resistant
- Solvents Resistant
- Saltwater Resistant
- IP67 Protection
- IK08 Protection

CERTIFICATIONS

With factory-installed connectors. cULus Listed, CE, TUV and RoHS compliant and passes rigorous environmental, optical, mechanical, and electrical testing.

CONTENTS

- P2** LED Specifications
- P10** Connectors
- P13** Tool Kit
- P14** Drivers
- P15** Profiles



FloppyFlex® F22 B

WHITE - VERTICAL BENDING - PVC
FLAT PROFILE LED NEON



FIREFLY LIGHTING

Phone : +61 7 3254 4333

Email : sales@fireflylighting.com.au

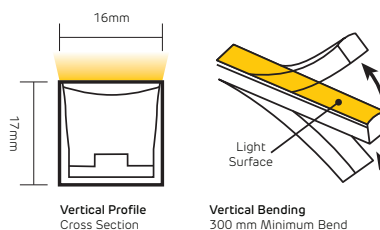
Address : 9/29 Links Ave North, Eagle Farm.

Brisbane QLD 4009 Australia

www.fireflylighting.com.au

F22-B Vertical Bending White PVC Specifications

Part Number	LN-F22B-22-VB	LN-F22B-27-VB	LN-F22B-30-VB	LN-F22B-35-VB	LN-F22B-40-VB	LN-F22B-57-VB
Type	Dimmable Fixed White					
LED Colour	2200K	2700K	3000K	3500K	4000K	5700K
CCT	2238±102K	2725±145K	3045±175K	3465±245K	3985±275K	5669±355K
Lumen/m	420	420	420	480	480	450
CRI	82-87					
Beam Angle, Average (50%)	113.2°					
Cut & Connect Unit Length	55.6 mm					
Number of Units Per Meter	18					
LED Quantity Per Unit	6					
LED Quantity Per Meter	108					
Base Colour	White					
Housing	PVC					
Minimum Bend Diameter	300mm					
Bending Direction	Vertical Bending					
Connectors & Hardware	Factory molded connectors, Field attachable connectors, Aluminium mounting channels, Plastic mounting channels					
Operating Voltage	24V DC					
Wiring	2-Wire					
Power Consumption	12 W/m					
Max Fixture Runs	Single end feed	10 m				
	Double end feed	20 m				
Control	DMX-512/Ethernet via ProPlex BuckBoost System, DMX-512 via FloppyDrive 2X2, Dimmable MLV LED Driver, Non-dimmable AC/DC LED Driver					
Installation Temperature	0 to 45 °C					
Operating Temperature	-20 to 45 °C					
Mounting Surface Temperature	60 °C Max.					
Storage Temperature	-20 to 60 °C					
Dimensions (WxHxD)	16 mm x 17 mm x variable					
Ingress Protection	IP67 with Molded connectors, IP68 with Double Molded connectors, IP67 with Snap Connect connectors					
Listing	UL2108 Class 2, UL2108 Non Class 2, UL676*, CE-EMC, IS 10322 (*UL676 rating requires the use of Thickened Plastic Profile for mounting)					
Warranty	3 Years					
Wire Legend						



FloppyFlex® F22 B

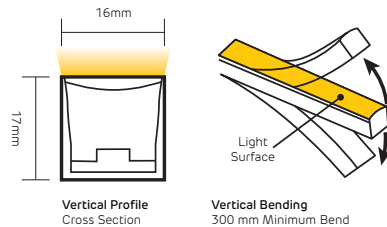
WHITE - VERTICAL BENDING - SILICONE FLAT PROFILE LED NEON



FIREFLY LIGHTING
 Phone : +61 7 3254 4333
 Email : sales@fireflylighting.com.au
 Address : 9/29 Links Ave North, Eagle Farm.
 Brisbane QLD 4009 Australia
www.fireflylighting.com.au

F22-B Vertical Bending White Silicone Specifications

Part Number	SLN-F22B-22-VB	SLN-F22B-27-VB	SLN-F22B-30-VB	SLN-F22B-35-VB	SLN-F22B-40-VB	SLN-F22B-57-VB
Type	Dimmable Fixed White					
LED Colour	2200K	2700K	3000K	3500K	4000K	5700K
CCT	2238±66K	2725±85K	3045±105K	3465±245K	3985±150K	5669±305K
Lumen/m	450	565	565	580	580	580
CRI	82-87					
Beam Angle, Average (50%)	113.2°					
Cut & Connect Unit Length	55.6 mm					
Number of Units Per Meter	18					
LED Quantity Per Unit	6					
LED Quantity Per Meter	108					
Base Colour	White					
Housing	Silicone					
Minimum Bend Diameter	300mm					
Bending Direction	Vertical Bending					
Connectors & Hardware	Factory molded connectors, field attachable connectors, Aluminium mounting channels, Plastic mounting channels					
Operating Voltage	24V DC					
Wiring	2-Wire					
Power Consumption	12 W/m					
Max Fixture Runs	Single end feed	15 m				
	Double end feed	30 m				
Control	DMX-512/Ethernet via ProPlex BuckBoost System, DMX-512 via FloppyDrive 2X2, Dimmable MLV LED Driver, Non-dimmable AC/DC LED Driver					
Installation Temperature	-40 to 50 °C					
Operating Temperature	-40 to 55 °C					
Mounting Surface Temperature	85 °C Max.					
Storage Temperature	-40 to 60 °C					
Dimensions (WxHxD)	16 mm x 17 mm x variable					
Ingress Protection	IP68 with Molded connectors, IP67 with Snap Connect connectors					
Listing	UL2108 Class 2, CE-EMC, IS 10322					
Warranty	5 Years					
Wire Legend						



FloppyFlex® F22 B

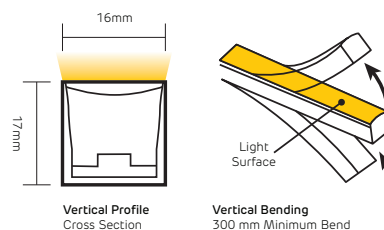
SINGLE COLOUR - VERTICAL BENDING - PVC FLAT PROFILE LED NEON



FIREFLY LIGHTING
 Phone : +61 7 3254 4333
 Email : sales@fireflylighting.com.au
 Address : 9/29 Links Ave North, Eagle Farm.
 Brisbane QLD 4009 Australia
www.fireflylighting.com.au

F22-B Vertical Bending Colour PVC Specifications

Part Number	LN-F22B-R-VB	LN-F22B-A-VB	LN-F22B-G-VB	LN-F22B-B-VB
Type	Dimmable Fixed Colour			
LED Colour	Red	Amber	Green	Blue
Wavelength	618-624nm	588-594nm	522-528nm	468-474nm
Lumen/m	170	170	450	85
Beam Angle, Average (50%)	116.5°			
Cut & Connect Unit Length	83.34 mm		55.6 mm	
Number of Units Per Meter	12		18	
LED Quantity Per Unit	9		6	
LED Quantity Per Meter	108			
Base Colour	White			
Housing	PVC			
Minimum Bend Diameter	300mm			
Bending Direction	Vertical Bending			
Connectors & Hardware	Factory molded connectors, Field attachable connectors, Aluminium mounting channels, Plastic mounting channels			
Operating Voltage	24V DC			
Wiring	2-Wire			
Power Consumption	8 W/m		12 W/m	
Max Fixture Runs	Single end feed	15 m	10 m	
	Double end feed	30 m	20 m	
Control	DMX-512/Ethernet via ProPlex BuckBoost System, DMX-512 via FloppyDrive 2X2, Dimmable MLV LED Driver, Non-dimmable AC/DC LED Driver			
Installation Temperature	0 to 45 °C			
Operating Temperature	-20 to 50 °C		-20 to 45 °C	
Mounting Surface Temperature	60 °C			
Storage Temperature	-20 to 60 °C			
Dimensions (WxHxD)	16 mm x 17 mm x variable			
Ingress Protection	IP67 with Molded connectors, IP68 with Double Molded connectors, IP67 with Snap Connect connectors			
Listing	UL2108 Class 2, UL2108 Non Class 2, UL676*, CE-EMC, IS 10322 (* UL676 rating requires the use of Thickened Plastic Profile for mounting)			
Warranty	3 Years			
Wire Legend				



FloppyFlex® F22 B

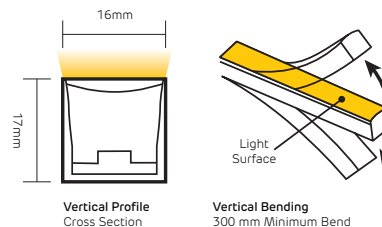
SINGLE COLOUR - VERTICAL BENDING - SILICONE FLAT PROFILE LED NEON



FIREFLY LIGHTING
 Phone : +61 7 3254 4333
 Email : sales@fireflylighting.com.au
 Address : 9/29 Links Ave North, Eagle Farm.
 Brisbane QLD 4009 Australia
www.fireflylighting.com.au

F22-B Vertical Bending Colour Silicone Specifications

Part Number	SLN-F22B-R-VB	SLN-F22B-A-VB	SLN-F22B-G-VB	SLN-F22B-B-VB
Type	Dimmable Fixed Colour			
LED Colour	Red	Amber	Green	Blue
Wavelength	618-624nm	588-594nm	522-528nm	468-474nm
Lumen/m	185	185	550	120
Beam Angle, Average (50%)	113.1°			
Cut & Connect Unit Length	83.34 mm		55.6 mm	
Number of Units Per Meter	12		18	
LED Quantity Per Unit	9		6	
LED Quantity Per Meter	108		108	
Base Colour	White			
Housing	Silicone			
Minimum Bend Diameter	300mm			
Bending Direction	Vertical Bending			
Connectors & Hardware	Factory molded connectors, Field attachable connectors, Aluminium mounting channels, Plastic mounting channels			
Operating Voltage	24V DC			
Wiring	2-Wire			
Power Consumption	8 W/m		12 W/m	
Max Fixture Runs	Single end feed	20 m	15 m	
	Double end feed	40 m	30 m	
Control	DMX-512/Ethernet via ProPlex BuckBoost System, DMX-512 via FloppyDrive 2X2, Dimmable MLV LED Driver, Non-dimmable AC/DC LED Driver			
Installation Temperature	-40 to 50 °C			
Operating Temperature	-40 to 60 °C		-40 to 55 °C	
Mounting Surface Temperature	85 °C Max.			
Storage Temperature	-40 to 60 °C			
Dimensions (WxHxD)	16 mm x 17 mm x variable			
Ingress Protection	IP68 with Molded connectors, IP67 with Snap Connect connectors			
Listing	UL2108 Class 2, CE-EMC, IS 10322			
Warranty	5 Years			
Wire Legend				



FloppyFlex® F22 B

SINGLE COLOUR - HORIZONTAL BENDING - PVC FLAT PROFILE LED NEON



FIREFLY LIGHTING

Phone : +61 7 3254 4333

Email : sales@fireflylighting.com.au

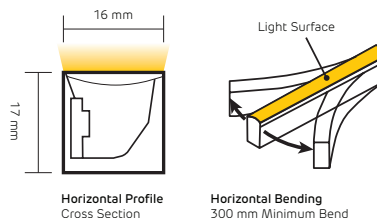
Address : 9/29 Links Ave North, Eagle Farm.

Brisbane QLD 4009 Australia

www.fireflylighting.com.au

F22-B Horizontal Bending Colour PVC Specifications

Part Number	LN-F22B-R-HB	LN-F22B-A-HB	LN-F22B-G-HB	LN-F22B-B-HB
Type	Dimmable Fixed Colour			
LED Colour	Red	Amber	Green	Blue
Wavelength	618-624nm	588-594nm	522-528nm	468-474nm
Lumen/m	150	150	400	65
Beam Angle, Average (50%)	115.3°			
Cut & Connect Unit Length	83.34 mm		55.6 mm	
Number of Units Per Meter	12		18	
LED Quantity Per Unit	9		6	
LED Quantity Per Meter	108			
Base Colour	White			
Housing	PVC			
Minimum Bend Diameter	300mm			
Bending Direction	Horizontal Bending			
Connectors & Hardware	Factory molded connectors, Field attachable connectors, Aluminium mounting channels, Plastic mounting channels			
Operating Voltage	24V DC			
Wiring	2-Wire			
Power Consumption	8 W/m		12 W/m	
Max Fixture Runs	Single end feed	15 m	10 m	
	Double end feed	30 m	20 m	
Control	DMX-512/Ethernet via ProPlex BuckBoost System, DMX-512 via FloppyDrive 2X2, Dimmable MLV LED Driver, Non-dimmable AC/DC LED Driver			
Installation Temperature	0 to 45 °C			
Operating Temperature	-20 to 50 °C		-20 to 45 °C	
Mounting Surface Temperature	60 °C Max.			
Storage Temperature	-20 to 60 °C			
Dimensions (WxHxD)	16 mm x 17 mm x variable			
Ingress Protection	IP67 with Molded connectors, IP68 with Double Molded connectors, IP67 with Snap Connect connectors			
Listing	UL2108 Class 2, UL2108 Non Class 2, UL676*, CE-EMC, IS 10322 (* UL676 rating requires the use of Thickened Plastic Profile for mounting)			
Warranty	3 Years			
Wire Legend				



FloppyFlex® F22 B

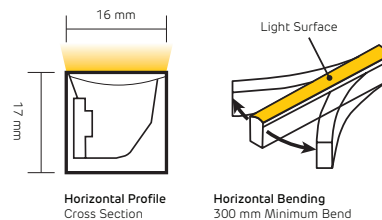
SINGLE COLOUR - HORIZONTAL BENDING - SILICONE FLAT PROFILE LED NEON



FIREFLY LIGHTING
 Phone : +61 7 3254 4333
 Email : sales@fireflylighting.com.au
 Address : 9/29 Links Ave North, Eagle Farm.
 Brisbane QLD 4009 Australia
www.fireflylighting.com.au

F22-B Horizontal Bending Colour Silicone Specifications

Part Number	SLN-F22B-R-HB	SLN-F22B-A-HB	SLN-F22B-G-HB	SLN-F22B-B-HB
Type	Dimmable Fixed Colour			
LED Colour	Red	Amber	Green	Blue
Wavelength	618-624nm	588-594nm	522-528nm	468-474nm
Lumen/m	165	165	450	110
Beam Angle, Average (50%)	112.2°			
Cut & Connect Unit Length	83.34 mm		55.6 mm	
Number of Units Per Meter	12		18	
LED Quantity Per Unit	9		6	
LED Quantity Per Meter	108		108	
Base Colour	White			
Housing	Silicone			
Minimum Bend Diameter	300mm			
Bending Direction	Horizontal Bending			
Connectors & Hardware	Factory molded connectors, Field attachable connectors, Aluminium mounting channels, Plastic mounting channels			
Operating Voltage	24V DC			
Wiring	2-Wire			
Power Consumption	8 W/m		12 W/m	
Max Fixture Runs	Single end feed	20 m	15 m	
	Double end feed	40 m	30 m	
Control	DMX-512/Ethernet via ProPlex BuckBoost System, DMX-512 via FloppyDrive 2X2, Dimmable MLV LED Driver, Non-dimmable AC/DC LED Driver			
Installation Temperature	-40 to 50 °C			
Operating Temperature	-40 to 60 °C		-40 to 55 °C	
Mounting Surface Temperature	85 °C Max.			
Storage Temperature	-40 to 60 °C			
Dimensions (WxHxD)	16 mm x 17 mm x variable			
Ingress Protection	IP68 with Molded connectors, IP67 with Snap Connect connectors			
Listing	UL2108 Class 2, CE-EMC, IS 10322			
Warranty	5 Years			
Wire Legend				



FloppyFlex® F22 B

WHITE - HORIZONTAL BENDING - PVC FLAT PROFILE LED NEON



FIREFLY LIGHTING

Phone : +61 7 3254 4333

Email : sales@fireflylighting.com.au

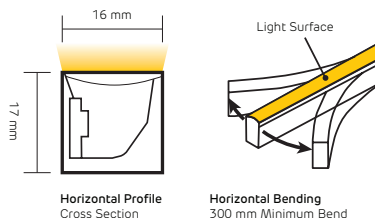
Address : 9/29 Links Ave North, Eagle Farm.

Brisbane QLD 4009 Australia

www.fireflylighting.com.au

F22-B Horizontal Bending White PVC Specifications

Part Number	LN-F22B-22-HB	LN-F22B-27-HB	LN-F22B-30-HB	LN-F22B-35-HB	LN-F22B-40-HB	LN-F22B-57-HB
Type	Dimmable Fixed White					
LED Colour	2200K	2700K	3000K	3500K	4000K	5700K
CCT	2238±102K	2725±145K	3045±175K	3465±245K	3985±275K	5669±355K
Lumen/m	400	400	400	450	450	400
CRI	82-87					
Beam Angle, Average (50%)	116°					
Cut & Connect Unit Length	55.6 mm					
Number of Units Per Meter	18					
LED Quantity Per Unit	6					
LED Quantity Per Meter	108					
Base Colour	White					
Housing	PVC					
Minimum Bend Diameter	300mm					
Bending Direction	Horizontal Bending					
Connectors & Hardware	Factory molded connectors, Field attachable connectors, Aluminium mounting channels, Plastic mounting channels					
Operating Voltage	24V DC					
Wiring	2-Wire					
Power Consumption	12 W/m					
Max Fixture Runs	Single end feed	10 m				
	Double end feed	20 m				
Control	DMX-512/Ethernet via ProPlex BuckBoost System, DMX-512 via FloppyDrive 2X2, Dimmable MLV LED Driver, Non-dimmable AC/DC LED Driver					
Installation Temperature	0 to 45 °C					
Operating Temperature	-20 to 45 °C					
Mounting Surface Temperature	60 °C Max.					
Storage Temperature	-20 to 60 °C					
Dimensions (WxHxD)	16 mm x 17 mm x variable					
Ingress Protection	IP67 with Molded connectors, IP68 with Double Molded connectors, IP67 with Snap Connect connectors					
Listing	UL2108 Class 2, UL2108 Non Class 2, UL676*, CE-EMC, IS 10322 (*UL676 rating requires the use of Thickened Plastic Profile for mounting)					
Warranty	3 Years					
Wire Legend						



FloppyFlex[®] F22 B

WHITE - HORIZONTAL BENDING - SILICONE FLAT PROFILE LED NEON



FIREFLY LIGHTING

Phone : +61 7 3254 4333

Email : sales@fireflylighting.com.au

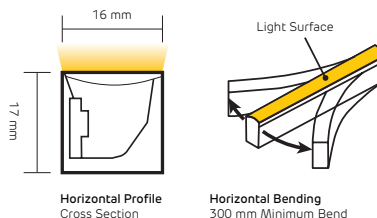
Address : 9/29 Links Ave North, Eagle Farm.

Brisbane QLD 4009 Australia

www.fireflylighting.com.au

F22-B Horizontal Bending White Silicone Specifications

Part Number	SLN-F22B-22-HB	SLN-F22B-27-HB	SLN-F22B-30-HB	SLN-F22B-35-HB	SLN-F22B-40-HB	SLN-F22B-57-HB
Type	Dimmable Fixed White					
LED Colour	2200K	2700K	3000K	3500K	4000K	5700K
CCT	2238±66K	2725±85K	3045±105K	3465±245K	3985±150K	5669±305K
Lumen/m	380	470	470	480	480	480
CRI	82-87					
Beam Angle, Average (50%)	112.3°					
Cut & Connect Unit Length	55.6 mm					
Number of Units Per Meter	18					
LED Quantity Per Unit	6					
LED Quantity Per Meter	108					
Base Colour	White					
Housing	Silicone					
Minimum Bend Diameter	300mm					
Bending Direction	Horizontal Bending					
Connectors & Hardware	Factory molded connectors, field attachable connectors, Aluminium mounting channels, Plastic mounting channels					
Operating Voltage	24V DC					
Wiring	2-Wire					
Power Consumption	12 W/m					
Max Fixture Runs	Single end feed	15 m				
	Double end feed	30 m				
Control	DMX-512/Ethernet via ProPlex BuckBoost System, DMX-512 via FloppyDrive 2X2, Dimmable MLV LED Driver, Non-dimmable AC/DC LED Driver					
Installation Temperature	-40 to 50 °C					
Operating Temperature	-40 to 55 °C					
Mounting Surface Temperature	85 °C Max.					
Storage Temperature	-40 to 60 °C					
Dimensions (WxHxD)	16 mm x 17 mm x variable					
Ingress Protection	IP68 with Molded connectors, IP67 with Snap Connect connectors					
Listing	UL2108 Class 2, CE-EMC, IS 10322					
Warranty	5 Years					
Wire Legend						



FloppyFlex® F22 B

FACTORY MOLDED CONNECTORS

IP67 PVC OR IP68 SILICONE



FIREFLY LIGHTING

Phone : +61 7 3254 4333

Email : sales@fireflylighting.com.au

Address : 9/29 Links Ave North, Eagle Farm.

Brisbane QLD 4009 Australia

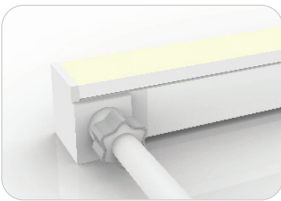
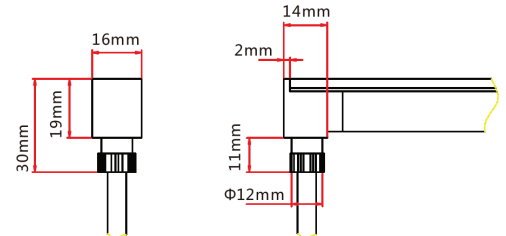
www.fireflylighting.com.au



Molded Bottom Entry Connection

Connects FloppyFlex F22 to power supply with pre-installed end feed cable, IP67.

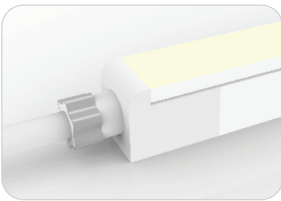
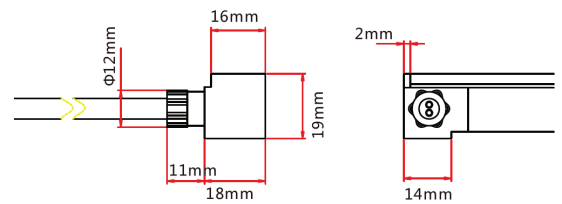
Cable length available in 0.3 m, 1 m, 3 m, 5 m, 10 m.



Molded Side Entry Connection

Connects FloppyFlex F22 to power supply with pre-installed side feed cable, IP67.

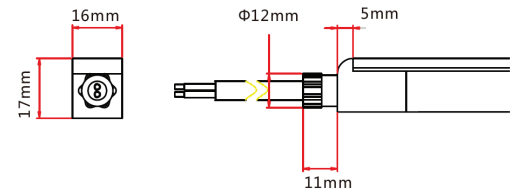
Cable length available in 0.3 m, 1 m, 3 m, 5 m, 10 m.



Molded End Entry Connection

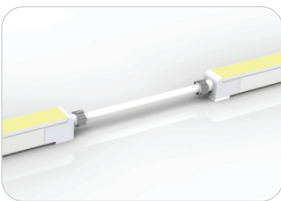
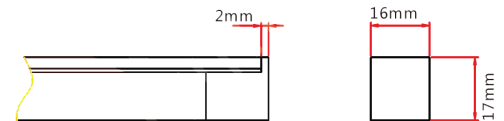
Connects FloppyFlex F22 to power supply with pre-installed end feed cable, IP67.

Cable length available in 0.3 m, 1 m, 3 m, 5 m, 10 m.



Molded End Cap

Pre-installed termination protection of FloppyFlex F22, IP67.



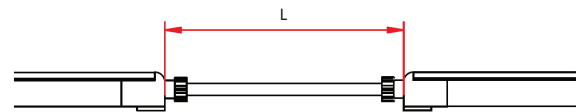
Molded End Entry Connection

Connects two pieces of FloppyFlex F22 together with a flexible cable, IP67.

Cable length available in 0.3 - 1 m.

Maximum 8 jumpers per 20 m

Maximum 4 jumpers per 10 m



Molded T-Feed Connection

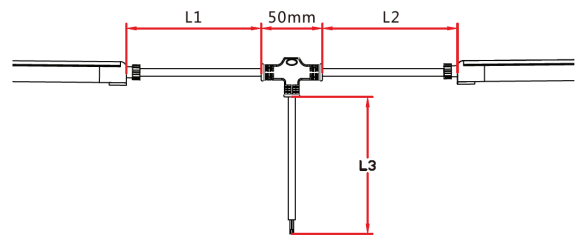
Connects two pieces of FloppyFlex F22 together with powered T-joint, IP67.

L1 and L2 length available in 0.15-0.5 m.

L3 length available in 0.3 - 1 m

Maximum 8 T-Feeds per 20 m

Maximum 4 T-Feeds per 10 m

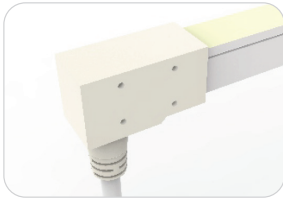


FloppyFlex® F22 B

FACTORY DOUBLE MOLDED CONNECTORS
IP68 PVC ONLY

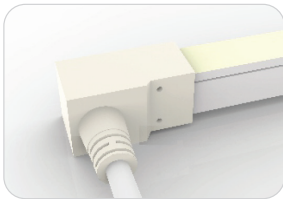
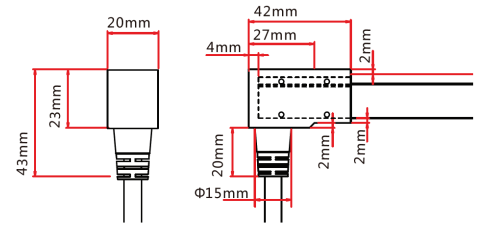


FIREFLY LIGHTING
Phone : +61 7 3254 4333
Email : sales@fireflylighting.com.au
Address : 9/29 Links Ave North, Eagle Farm.
Brisbane QLD 4009 Australia
www.fireflylighting.com.au



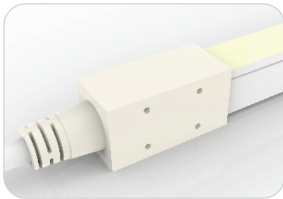
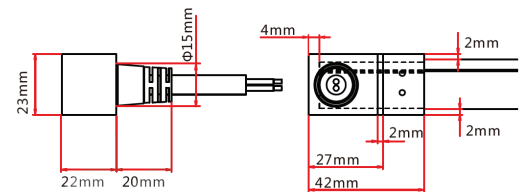
Double-Molded Bottom Entry Connection

Connects FloppyFlex F22 to power supply with pre-installed end feed cable, IP68.
Cable length available in 0.3 m, 1 m, 3 m, 5 m, 10 m.



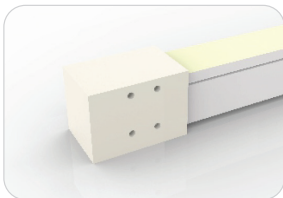
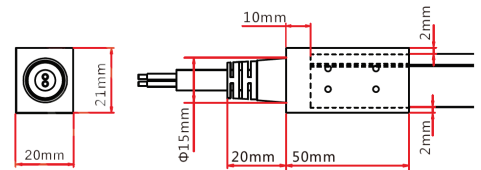
Double-Molded Side Entry Connection

Connects FloppyFlex F22 to power supply with pre-installed side feed cable, IP68.
Cable length available in 0.3 m, 1 m, 3 m, 5 m, 10 m.



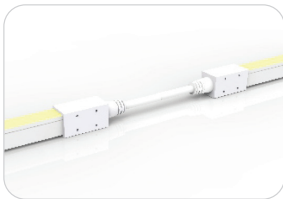
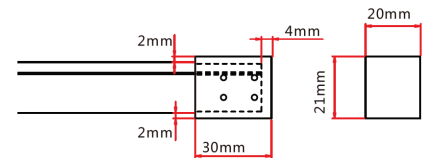
Double-Molded End Entry Connection

Connects FloppyFlex F22 to power supply with pre-installed end feed cable, IP68.
Cable length available in 0.3 m, 1 m, 3 m, 5 m, 10 m.



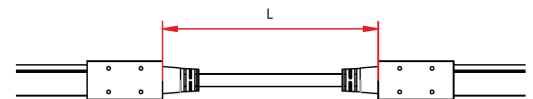
Double-Molded End Cap

Pre-installed termination protection of FloppyFlex F22, IP68.



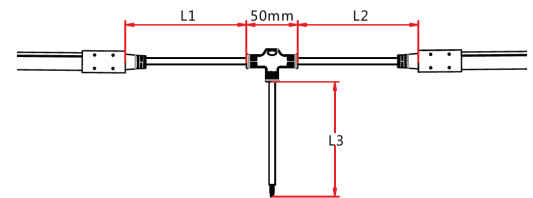
Double-Molded End Entry Connection

Connects two pieces of FloppyFlex F22 together with a flexible cable, IP68.
Cable length available in 0.3 - 1 m.
Maximum 8 jumpers per 20 m
Maximum 4 jumpers per 10 m



Double-Molded T-Feed Connection

Connects two pieces of FloppyFlex F22 together with powered T-joint, IP68.
L1 and L2 length available in 0.15-0.5 m.
L3 length available in 0.3 - 1 m
Maximum 8 T-Feeds per 20 m
Maximum 4 T-Feeds per 10 m

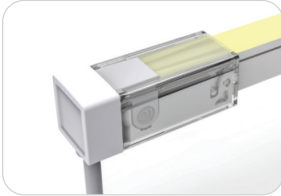


FloppyFlex® F22 B

SNAP CONNECT CONNECTORS IP67 PVC OR SILICONE



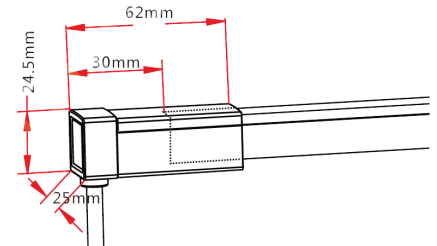
FIREFLY LIGHTING
 Phone : +61 7 3254 4333
 Email : sales@fireflylighting.com.au
 Address : 9/29 Links Ave North, Eagle Farm.
 Brisbane QLD 4009 Australia
www.fireflylighting.com.au



Snap Connect Bottom Entry

Connects FloppyFlex F22 to power supply with user-installable end feed cable, IP67.

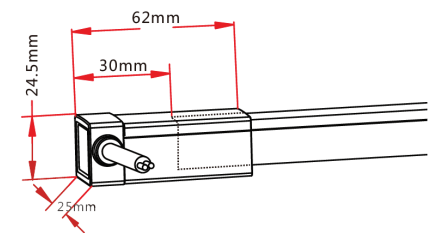
Cable length available in 0.3 m, 1 m, 3 m, 5 m, 10 m.



Snap Connect Side Entry

Connects FloppyFlex F22 to power supply with user-installable side feed cable, IP67.

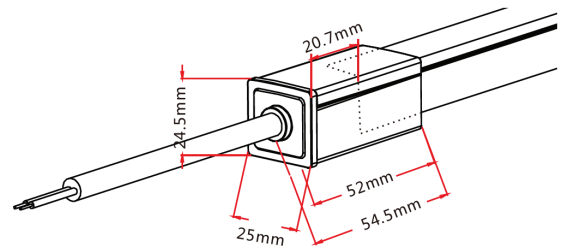
Cable length available in 0.3 m, 1 m, 3 m, 5 m, 10 m.



Snap Connect End Entry

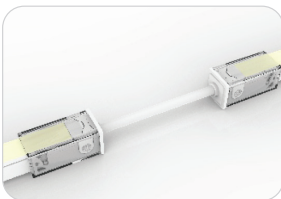
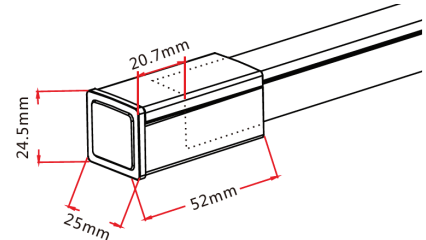
Connects FloppyFlex F22 to power supply with user-installable end feed cable, IP67.

Cable length available in 0.3 m, 1 m, 3 m, 5 m, 10 m.



Snap Connect End Cap

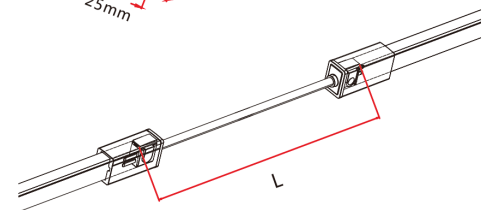
User-installable termination protection of FloppyFlex F22, IP67.



Snap Connect End Entry

Connects two pieces of FloppyFlex F22 together with a flexible cable, user -installable, IP67.

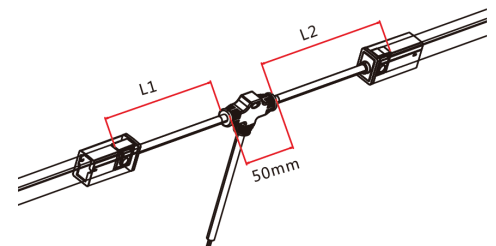
Cable length available in 0.3 m, 1 m, and 3 m.



Snap Connect T-Feed

Connects two pieces of FloppyFlex F22 together with powered T-joint, user-installable, IP67.

L1 and L2 length available in 0.3 m.
 L3 length available in 1 m



FloppyFlex® F22 B

MINI TOOL KIT ASSEMBLY TOOLS



FIREFLY LIGHTING
Phone : +61 7 3254 4333
Email : sales@fireflylighting.com.au
Address : 9/29 Links Ave North, Eagle Farm,
Brisbane QLD 4009 Australia
www.fireflylighting.com.au

Mini Tool Kit

The FloppyFlex Mini Tool Kit includes the tools needed to properly cut and terminate FloppyFlex LED Neon with Snap Connect field-installable connectors. Correct installation ensures proper electrical contact, IP rating integrity, and warranty compliance.

Includes cutter, insertion spreader and grippers.

We recommend using these tools for optimum installation results and reduced risk of damage to the product.



FloppyFlex® F22 B

DRIVERS



FIREFLY LIGHTING
 Phone : +61 7 3254 4333
 Email : sales@fireflylighting.com.au
 Address : 9/29 Links Ave North, Eagle Farm.
 Brisbane QLD 4009 Australia
www.fireflylighting.com.au

L-TECH 4 channel DMX Decoder

- DMX dimming for 24V LED Tapes, Neons, and other low voltage systems of all types. Perfect for FloppyFlex
- One 24V 5-wire output
- Addressing via RDM or built in DIP switches
- Pluggable Terminal Block (PTB) screw terminals for bare-wire, installation flexibility
- Realises 0-100% dimming or different lighting effects.
- Works with DIM, CT, RGB, RGBW LEDs
- Can control 4 individual neon lengths.



L-TECH 3 channel DMX Decoder

- DMX dimming for 24V LED Tapes, Neons, and other low voltage systems of all types. Perfect for FloppyFlex
- One 24V 4-wire output
- Addressing via RDM or built in DIP switches
- Pluggable Terminal Block (PTB) screw terminals for bare-wire, installation flexibility
- Realises 0-100% dimming or different lighting effects.
- Works with DIM, CT, RGB LEDs
- Can control 3 individual neon lengths.



Mean Well 24 VDC LED Drivers

- High efficiency 24VDC LED drivers in DIN Rail and stand-alone with multiple wattage configurations
- IP-rated units available
- Fixed or dimmable output. Dimming available via 1-10VDC, 10V PWM signal, resistance, or built-in potentiometer



FloppyFlex® F22 B

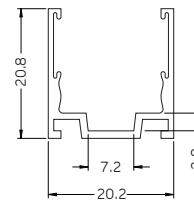
STRAIGHT ALUMINIUM CHANNEL



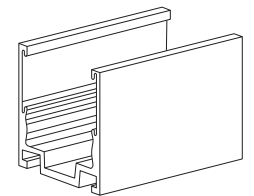
FIREFLY LIGHTING
 Phone : +61 7 3254 4333
 Email : sales@fireflylighting.com.au
 Address : 9/29 Links Ave North, Eagle Farm.
 Brisbane QLD 4009 Australia
www.fireflylighting.com.au



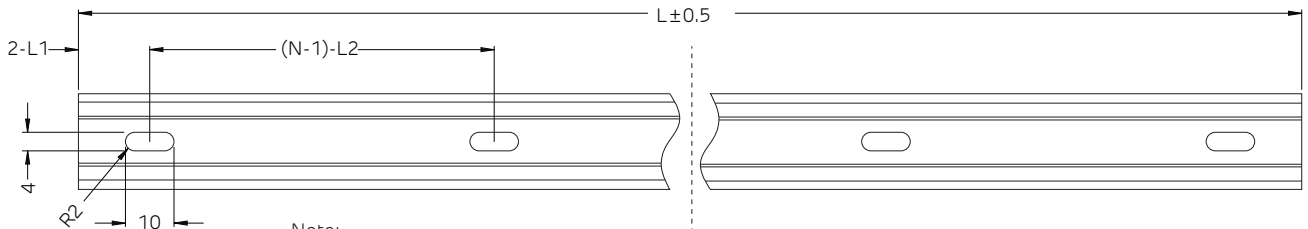
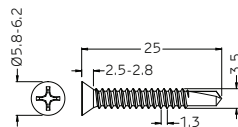
Versatile self-locking profile can be used to mount FloppyFlex F22 LED neon in any orientation including overhead at any angle. Extruded 6063 aluminum construction with elastic serrated grip tape hold the FloppyFlex neon firmly through varying temperatures of -20 to +70 °C.



Tolerance: ±0.2 mm



Dimensions in millimeters



Note:

1. 2-L1 refers to two of symmetric L1 in each piece of profile.
 2. (N-1)-L2 refers to (N minus one) of symmetric L2 in each piece of profile.
- "N" hereby stands for its corresponding "Hole Number" in the table below.

Part Number	Length	L1	L2	Slotted Hole	Number of Holes
LNCH-F22-A1-02	20 mm	10 mm	N/A	4x10 mm	1
LNCH-F22-A1-05	500 mm	50 mm	200 mm	4x10 mm	3
LNCH-F22-A1-1	1000 mm	100 mm	200 mm	4x10 mm	5
LNCH-F22-A1-2	2000 mm	100 mm	200 mm	4x10 mm	10



FloppyFlex® F22 B

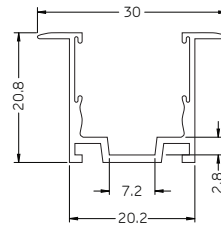
FLANGE ALUMINIUM PROFILE



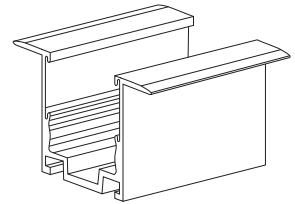
FIREFLY LIGHTING
 Phone : +61 7 3254 4333
 Email : sales@fireflylighting.com.au
 Address : 9/29 Links Ave North, Eagle Farm.
 Brisbane QLD 4009 Australia
www.fireflylighting.com.au



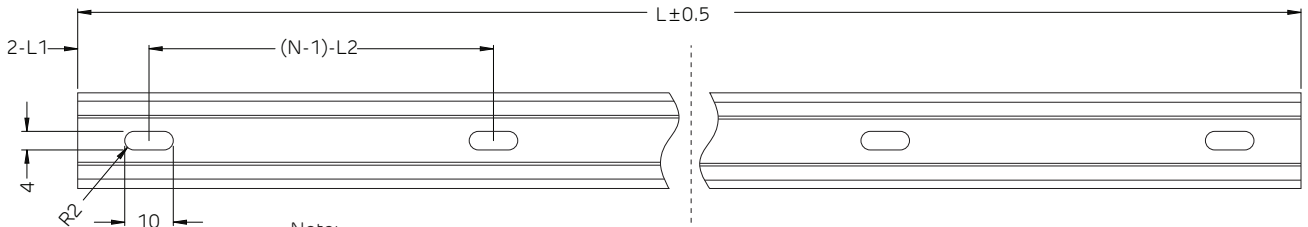
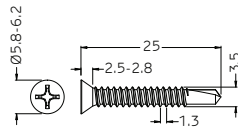
Versatile self-locking profile can be used to mount recessed FloppyFlex F22 LED neon in any orientation including overhead at any angle. Extruded 6063 aluminum construction with elastic serrated grip tape hold the FloppyFlex neon firmly through varying temperatures of -20 to +70 °C.



Tolerance: ±0.2 mm



Dimensions in millimeters



Note:

1. 2-L1 refers to two of symmetric L1 in each piece of profile.
 2. (N-1)-L2 refers to (N minus one) of symmetric L2 in each piece of profile.
- "N" hereby stands for its corresponding "Hole Number" in the table below.

Part Number	Length	L1	L2	Slotted Hole	Number of Holes
LNCH-F22-A3-02	20 mm	10 mm	N/A	4x10 mm	1
LNCH-F22-A3-05	500 mm	50 mm	200 mm	4x10 mm	3
LNCH-F22-A3-1	1000 mm	100 mm	200 mm	4x10 mm	5
LNCH-F22-A3-2	2000 mm	100 mm	200 mm	4x10 mm	10

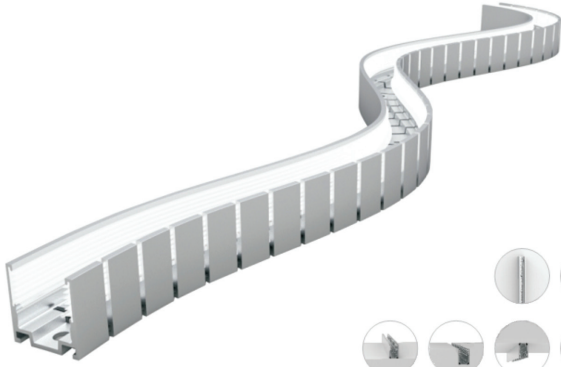


FloppyFlex® F22 B

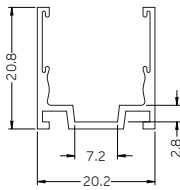
FLEXIBLE SELF LOCKING ALUMINIUM PROFILE



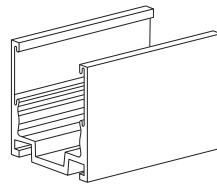
FIREFLY LIGHTING
 Phone : +61 7 3254 4333
 Email : sales@fireflylighting.com.au
 Address : 9/29 Links Ave North, Eagle Farm.
 Brisbane QLD 4009 Australia
www.fireflylighting.com.au



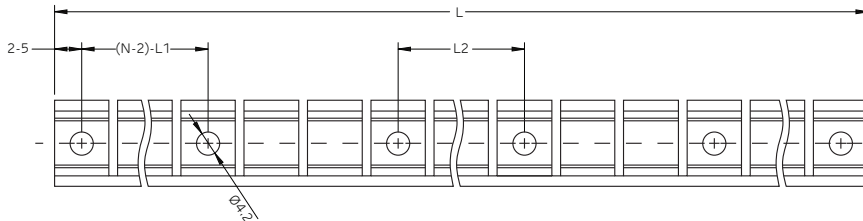
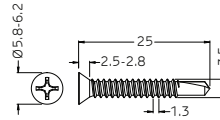
Flexible self-locking profile can be used to mount FloppyFlex F22Horizontal Bending LED neon in custom freeform curves while maintaining clamping force. May be mounted in any orientation including overhead at any angle.



Tolerance: ±0.2 mm



Dimensions in millimeters



Note:

1. 2-5 refers to two of symmetric 5mm in each piece of profile
2. (N-2)-L1 refers to (M minus two) of symmetric L1 in each piece of profile
 "N" hereby stands for its corresponding "Hole Number" in the table below.

Part Number	Length	L1	L2	Screw Hole	Number of Holes
LNCH-F22-A2-05	500 mm	116.5 mm	23.3 mm	Ø4.2 mm	6
LNCH-F22-A2-1	1000 mm	116.5 mm	58.2 mm	Ø4.2 mm	10



FloppyFlex® F22 B

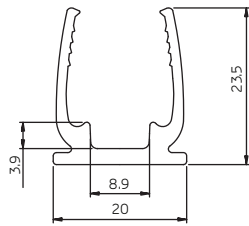
THICKENED PLASTIC CHANNEL



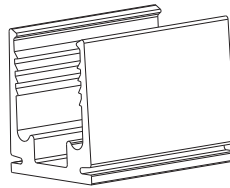
FIREFLY LIGHTING
 Phone : +61 7 3254 4333
 Email : sales@fireflylighting.com.au
 Address : 9/29 Links Ave North, Eagle Farm.
 Brisbane QLD 4009 Australia
www.fireflylighting.com.au



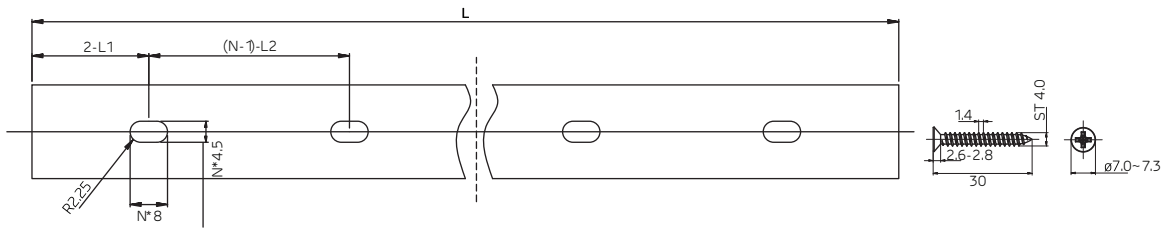
Non-metallic profile specially designed for FloppyFlex F22 LED neon in fully-submersed underwater applications up to 2 meters in depth. Thickened Polycarbonate construction to 3mm thickness. Excellent corrosion and fracture resistance properties. Can be mounted in any orientation including overhead at any angle.



Tolerance: ±0.3mm



Dimensions in mm



Note:

1. 2-L1 refers to two of symmetric L1 in each piece of profile.
 2. (N-1)-L2 refers to (N minus one) of symmetric L2 in each piece of profile.
- "N" hereby stands for its corresponding "Hole Number" in the table below.

Part Number	Length	L1	L2	Slotted Hole	Number of Holes
LNCH-F22-P1-35	35 mm	17.5 mm	N/A	4.5x8 mm	1
LNCH-F22-P1-05	500 mm	50 mm	200 mm	4.5x8 mm	3
LNCH-F22-P1-1	1000 mm	100 mm	200 mm	4.5x8 mm	5
LNCH-F22-P1-2	2000 mm	100 mm	200 mm	4.5x8 mm	10

