

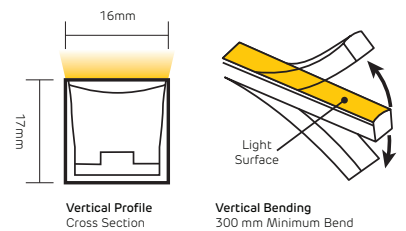
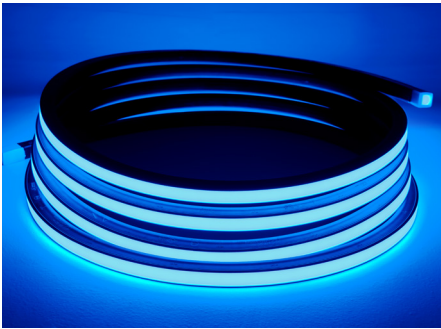
FloppyFlex® F22 A/E/D

RGB - RGBW - DYNAMIC WHITE - VERTICAL BENDING
 VARIABLE COLOUR LED NEON

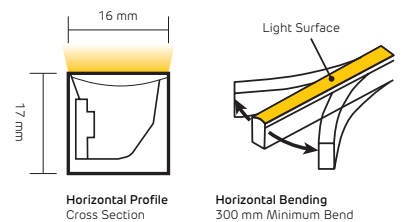


FIREFLY LIGHTING
 Phone : +61 7 3254 4333
 Email : sales@fireflylighting.com.au
 Address : 9/29 Links Ave North, Eagle Farm.
 Brisbane QLD 4009 Australia
www.fireflylighting.com.au

- 
 24V EXTRA
LOW VOLTAGE
- 
 INDOOR
OUTDOOR
- 
 UV
STABILISED
- 
 OUTDOOR
IP RATED
- 
 COMMERCIAL
GRADE
- 
 VANDAL
RESISTANT
- 
 GREEN
FRIENDLY
- 
 PVC
3 YEAR
WARRANTY
- 
 SILICONE
5 YEAR
WARRANTY



FloppyFlex F22 is flexible 24V LED neon with variable colour or dynamic white controlled via FloppyDrive or DMX decoder. It features a rich, vibrant colour palette with RGB, RGBW or Dynamic White LEDs Available with PVC housing or longer lasting Silicone housing. The minimum bend diameter is 300 mm. Features a homogenous LED surface without "skittles" effect.



FEATURES

Variable colour control in 83,34 mm cuttable units

Super bright with homogenous lighting surface

Seamless colour mixing, beautiful dimming via FloppyDrive or DMX decoder.

RGB has 118.1° beam angle (PVC), 113.9° (Silicone)
 RGBW has 113.0° beam angle (PVC), 113.6° (Silicone)
 Dynamic White has 115.9° beam angle (PVC), 113.2° (Silicone)

Wide range of accessories for joining, terminating, mounting, powering

Easy to use and install

300 mm minimum front-to-back bend diameter

Unlimited and unprecedented possibilities

APPLICATIONS

Installation, architectural, digital signage, gameshows, arcades, signs, film and television sets, theme parks, bars and clubs, cruise ships, creating words, indirect applications, and scenic elements

AVAILABLE CONNECTORS

Injection Molded Power Feed and End cap connectors, fully customizable for no-hassle installations. PVC IP67, Silicone IP68.

Double Molded IP68 Power Feed and End cap connectors, suitable for submersible applications. PVC only - not available for silicone versions.

RESISTANCE AND PROTECTIONS

Flame Resistant
 UV Resistant
 Solvents Resistant
 Saltwater Resistant
 IP67 Protection
 IK08 Protection

CERTIFICATIONS

With factory-installed connectors. cULus Listed, CE, TUV and RoHS compliant and passes rigorous environmental, optical, mechanical, and electrical testing.

CONTENTS

- P2** LED Specifications
- P8** Connectors
- P10** Tool Kit
- P11** Drivers
- P12** Profiles



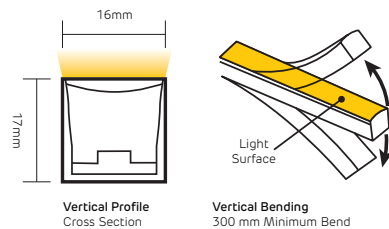
FloppyFlex® F22 A

RGB - VERTICAL BENDING VARIABLE COLOUR LED NEON



FIREFLY LIGHTING
 Phone : +61 7 3254 4333
 Email : sales@fireflylighting.com.au
 Address : 9/29 Links Ave North, Eagle Farm.
 Brisbane QLD 4009 Australia
www.fireflylighting.com.au

	PVC Specifications				Silicone Specifications			
Part Number	LN-F22A				SLN-F22A			
Type	Dimmable Variable Colour							
Colour	RGB							
Colour/CCT	Red	Green	Blue	R+G+B	Red	Green	Blue	R+G+B
Wavelength	618-624nm	522-528nm	468-474nm	-	618-624nm	522-528nm	468-474nm	-
Lumen/m	80	190	30	300	90	240	40	370
Beam Angle, Average (50%)	118,1°				113,9°			
Number of Pixels Per Meter	12							
LED Quantity Per Pixel	7							
LED Quantity Per Meter	84							
Base Colour	Black base standard, other colours available on request							
Housing	PVC				Silicone			
Cut & Connect Joints	Located Every 83,34 mm							
Minimum Bend Diameter	300 mm							
Bending Direction	Vertical Bending							
Connectors & Hardware	Factory molded connectors, Aluminium mounting channels, Plastic mounting channels							
Operating Voltage	24 V DC							
Wiring	3-Wire							
Power Consumption	12 W/m							
Max Fixture Runs	Single end feed	10 m Dynamic Operation			Single end feed	15 m Dynamic Operation		
		7 m Full Static Load				10 m Full Static Load		
	Double end feed	20 m Dynamic Operation			Double end feed	30 m Dynamic Operation		
		14 m Full Static Load				20 m Full Static Load		
Control	DMX-512/Ethernet via ProPlex BuckBoost System, DMX-512 via FloppyDrive 4X2, or DMX Decoder.							
Installation Temperature	0 to 45 °C				-40 to 50 °C			
Operating Temperature	-20 to 45 °C				-40 to 55 °C			
Mounting Surface Temperature	60 °C Max.				85 °C Max.			
Storage Temperature	-20 to 60 °C				-40 to 60 °C			
Dimensions (WxHxD)	16 mm x 17 mm x variable							
Ingress Protection	IP67 with Molded connectors IP68 with Double Molded connectors				IP68 with Molded connectors			
Listing	UL2108 Class 2, CE-EMC, IS 10322							
Warranty	3 Years				5 Years			
Wire Legend								



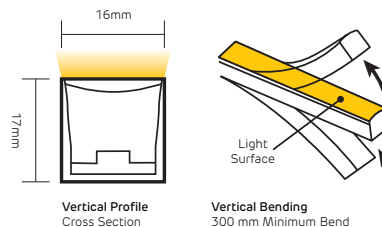
FloppyFlex® F22 E

RGBW - VERTICAL BENDING VARIABLE COLOUR LED NEON



FIREFLY LIGHTING
 Phone : +61 7 3254 4333
 Email : sales@fireflylighting.com.au
 Address : 9/29 Links Ave North, Eagle Farm.
 Brisbane QLD 4009 Australia
www.fireflylighting.com.au

	PVC Specifications				Silicone Specifications			
Part Number	LN-F22E				SLN-F22E			
Type	Dimmable Variable Colour							
Colour	RGBW							
Colour/CCT	Red	Green	Blue	White	Red	Green	Blue	White
Wavelength	618-624nm	522-528nm	468-474nm	2725±145K	618-624nm	522-528nm	468-474nm	2725 ± 85K
Lumen/m	80	190	30	190	90	240	40	200
Beam Angle, Average (50%)	113.0°				113.6°			
Number of Pixels Per Meter	12							
LED Quantity Per Pixel	7							
LED Quantity Per Meter	84							
Base Colour	Black base standard, other colours available on request							
Housing	PVC				Silicone			
Cut & Connect Joints	Located Every 83.34 mm							
Minimum Bend Diameter	300 mm							
Bending Direction	Vertical Bending							
Connectors & Hardware	Factory molded connectors, Aluminium mounting channels, Plastic mounting channels							
Operating Voltage	24V DC							
Wiring	3-Wire							
Power Consumption	15 W/m							
Max Fixture Runs	Single end feed	8 m Dynamic Operation			Single end feed	12 m Dynamic Operation		
		5 m Full Static Load				8 m Full Static Load		
	Double end feed	16 m Dynamic Operation			Double end feed	24 m Dynamic Operation		
		10 m Full Static Load				16 m Full Static Load		
Control	DMX-512/Ethernet via ProPlex BuckBoost System, DMX-512 via FloppyDrive 5X2, or DMX Decoder.							
Installation Temperature	0 to 45 °C				-40 to 50 °C			
Operating Temperature	-20 to 35 °C				-40 to 45 °C			
Mounting Surface Temperature	60 °C Max.				85 °C Max.			
Storage Temperature	-20 to 60 °C				-40 to 60 °C			
Dimensions (WxHxD)	16 mm x 17 mm x variable							
Ingress Protection	IP67 with Molded connectors IP68 with Double Molded connectors				IP68 with Molded connectors			
Listing	UL2108 Class 2, CE-EMC							
Warranty	3 Years				5 Years			
Wire Legend								



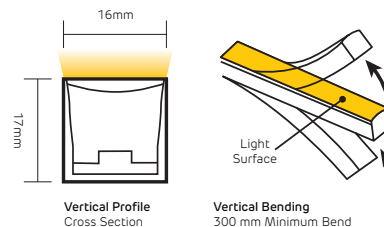
FloppyFlex® F22 D

DYNAMIC WHITE - VERTICAL BENDING VARIABLE WHITE LED NEON



FIREFLY LIGHTING
 Phone : +61 7 3254 4333
 Email : sales@fireflylighting.com.au
 Address : 9/29 Links Ave North, Eagle Farm.
 Brisbane QLD 4009 Australia
www.fireflylighting.com.au

	PVC Specifications		Silicone Specifications	
Part Number	LN-F22D		SLN-F22D	
Type	Dimmable Variable White			
Colour	Dynamic White 2200K-5700K			
Colour/CCT	Warm White 2200K	Cool White 5700K	Warm White 2200K	Cool White 5700K
CCT Tolerance	2238±102K	5669±355K	2238±66K	5669±305K
CRI	80			
Lumen/m	180	180	220	270
Beam Angle, Average (50%)	115.9°		113.2°	
Number of Units Per Meter	12			
LED Quantity Per Unit	12			
LED Quantity Per Meter	144			
Base Colour	White base standard, other colours available on request			
Housing	PVC		Silicone	
Cut & Connect Joints	Located Every 83.34 mm			
Minimum Bend Diameter	300 mm			
Bending Direction	Vertical Bending			
Connectors & Hardware	Factory molded connectors, Aluminium mounting channels, Plastic mounting channels			
Operating Voltage	24V DC			
Wiring	3-Wire			
Power Consumption	12 W/m			
Max Fixture Runs	Single end feed	20 m Dynamic Operation	Single end feed	30 m Dynamic Operation
		10 m Full Static Load		15 m Full Static Load
	Double end feed	40 m Dynamic Operation	Double end feed	60 m Dynamic Operation
		20 m Full Static Load		30 m Full Static Load
Control	DMX-512/Ethernet via ProPlex BuckBoost System, DMX-512 via FloppyDrive 3X2, or DMX Decoder.			
Installation Temperature	0 to 45 °C		-40 to 50 °C	
Operating Temperature	-20 to 45 °C		-40 to 55 °C	
Mounting Surface Temperature	60 °C Max.		85 °C Max.	
Storage Temperature	-20 to 60 °C		-40 to 60 °C	
Dimensions (WxHxD)	16 mm x 17 mm x variable			
Ingress Protection	IP67 with Molded connectors IP68 with Double Molded connectors		IP68 with Molded connectors	
Listing	UL2108 Class 2, UL676*, CE-EMC (* UL676 rating requires the use of Thickened Plastic Profile for mounting)		UL2108 Class 2, CE-EMC	
Warranty	3 Years		5 Years	
Wire Legend				



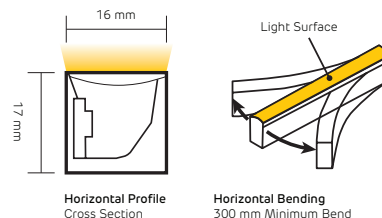
FloppyFlex® F22 A

RGB - HORIZONTAL BENDING VARIABLE COLOUR LED NEON



FIREFLY LIGHTING
 Phone : +61 7 3254 4333
 Email : sales@fireflylighting.com.au
 Address : 9/29 Links Ave North, Eagle Farm,
 Brisbane QLD 4009 Australia
www.fireflylighting.com.au

	PVC Specifications				Silicone Specifications			
Part Number	LN-F22A				SLN-F22A			
Type	Dimmable Variable Colour							
Colour	RGB							
Colour/CCT	Red	Green	Blue	R+G+B	Red	Green	Blue	R+G+B
Wavelength	618-624nm	522-528nm	468-474nm	-	618-624nm	522-528nm	468-474nm	-
Lumen/m	80	190	30	300	90	240	40	370
Beam Angle, Average (50%)	118.1°				113.9°			
Number of Pixels Per Meter	12							
LED Quantity Per Pixel	7							
LED Quantity Per Meter	84							
Base Colour	Black base standard, other colours available on request							
Housing	PVC				Silicone			
Cut & Connect Joints	Located Every 83.34 mm							
Minimum Bend Diameter	300 mm							
Bending Direction	Horizontal Bending							
Connectors & Hardware	Factory molded connectors, Aluminium mounting channels, Plastic mounting channels							
Operating Voltage	24V DC							
Wiring	3-Wire							
Power Consumption	12 W/m							
Max Fixture Runs	Single end feed	10 m Dynamic Operation			Single end feed	15 m Dynamic Operation		
		7 m Full Static Load				10 m Full Static Load		
	Double end feed	20 m Dynamic Operation			Double end feed	30 m Dynamic Operation		
		14 m Full Static Load				20 m Full Static Load		
Control	DMX-512/Ethernet via ProPlex BuckBoost System, DMX-512 via FloppyDrive 4X2, or DMX Decoder.							
Installation Temperature	0 to 45 °C				-40 to 50 °C			
Operating Temperature	-20 to 45 °C				-40 to 55 °C			
Mounting Surface Temperature	60 °C Max.				85 °C Max.			
Storage Temperature	-20 to 60 °C				-40 to 60 °C			
Dimensions (WxHxD)	16 mm x 17 mm x variable							
Ingress Protection	IP67 with Molded connectors IP68 with Double Molded connectors				IP68 with Molded connectors			
Listing	UL2108 Class 2, CE-EMC, IS 10322							
Warranty	3 Years				5 Years			
Wire Legend								



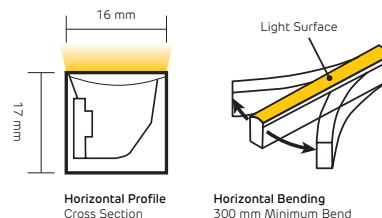
FloppyFlex® F22 E

RGBW - HORIZONTAL BENDING VARIABLE COLOUR LED NEON



FIREFLY LIGHTING
 Phone : +61 7 3254 4333
 Email : sales@fireflylighting.com.au
 Address : 9/29 Links Ave North, Eagle Farm.
 Brisbane QLD 4009 Australia
www.fireflylighting.com.au

	PVC Specifications				Silicone Specifications			
Part Number	LN-F22E				SLN-F22E			
Type	Dimmable Variable Colour							
Colour	RGBW							
Colour/CCT	Red	Green	Blue	White	Red	Green	Blue	White
Wavelength	618-624nm	522-528nm	468-474nm	2725±145K	618-624nm	522-528nm	468-474nm	2725 ± 85K
Lumen/m	80	190	30	190	90	240	40	200
Beam Angle, Average (50%)	113.0°				113.6°			
Number of Pixels Per Meter	12							
LED Quantity Per Pixel	7							
LED Quantity Per Meter	84							
Base Colour	Black base standard, other colours available on request							
Housing	PVC				Silicone			
Cut & Connect Joints	Located Every 83,34 mm							
Minimum Bend Diameter	300 mm							
Bending Direction	Horizontal Bending							
Connectors & Hardware	Factory molded connectors, Aluminium mounting channels, Plastic mounting channels							
Operating Voltage	24V DC							
Wiring	3-Wire							
Power Consumption	15 W/m							
Max Fixture Runs	Single end feed	8 m Dynamic Operation			Single end feed	12 m Dynamic Operation		
		5 m Full Static Load				8 m Full Static Load		
	Double end feed	16 m Dynamic Operation			Double end feed	24 m Dynamic Operation		
		10 m Full Static Load				16 m Full Static Load		
Control	DMX-512/Ethernet via ProPlex BuckBoost System, DMX-512 via FloppyDrive 5X2, or DMX Decoder.							
Installation Temperature	0 to 45 °C				-40 to 50 °C			
Operating Temperature	-20 to 35 °C				-40 to 45 °C			
Mounting Surface Temperature	60 °C Max.				85 °C Max.			
Storage Temperature	-20 to 60 °C				-40 to 60 °C			
Dimensions (WxHxD)	16 mm x 17 mm x variable							
Ingress Protection	IP67 with Molded connectors IP68 with Double Molded connectors				IP68 with Molded connectors			
Listing	UL2108 Class 2, CE-EMC							
Warranty	3 Years				5 Years			
Wire Legend								



FloppyFlex® F22 D

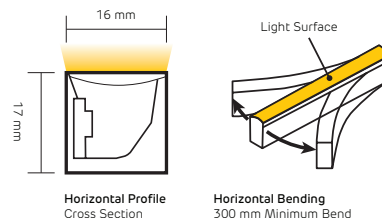
DYNAMIC WHITE - HORIZONTAL BENDING VARIABLE WHITE LED NEON



FIREFLY LIGHTING
 Phone : +61 7 3254 4333
 Email : sales@fireflylighting.com.au
 Address : 9/29 Links Ave North, Eagle Farm.
 Brisbane QLD 4009 Australia
www.fireflylighting.com.au



	PVC Specifications		Silicone Specifications	
Part Number	LN-F22D		SLN-F22D	
Type	Dimmable Variable White			
Colour	Dynamic White 2200K-5700K			
Colour/CCT	Warm White 2200K	Cool White 5700K	Warm White 2200K	Cool White 5700K
CCT Tolerance	2238±102K	5669±355K	2238±66K	5669±305K
CRI	80			
Lumen/m	180	180	220	270
Beam Angle, Average (50%)	115.9°		113.2°	
Number of Units Per Meter	12			
LED Quantity Per Unit	12			
LED Quantity Per Meter	144			
Base Colour	White base standard, other colours available on request			
Housing	PVC		Silicone	
Cut & Connect Joints	Located Every 83.34 mm			
Minimum Bend Diameter	300 mm			
Bending Direction	Horizontal Bending			
Connectors & Hardware	Factory molded connectors, Aluminium mounting channels, Plastic mounting channels			
Operating Voltage	24V DC			
Wiring	3-Wire			
Power Consumption	12 W/m			
Max Fixture Runs	Single end feed	20 m Dynamic Operation	Single end feed	30 m Dynamic Operation
		10 m Full Static Load		15 m Full Static Load
	Double end feed	40 m Dynamic Operation	Double end feed	60 m Dynamic Operation
		20 m Full Static Load		30 m Full Static Load
Control	DMX-512/Ethernet via ProPlex BuckBoost System, DMX-512 via FloppyDrive 3X2, or DMX Decoder.			
Installation Temperature	0 to 45 °C		-40 to 50 °C	
Operating Temperature	-20 to 45 °C		-40 to 55 °C	
Mounting Surface Temperature	60 °C Max.		85 °C Max.	
Storage Temperature	-20 to 60 °C		-40 to 60 °C	
Dimensions (WxHxD)	16 mm x 17 mm x variable			
Ingress Protection	IP67 with Molded connectors IP68 with Double Molded connectors		IP68 with Molded connectors	
Listing	UL2108 Class 2, UL676*, CE-EMC (* UL676 rating requires the use of Thickened Plastic Profile for mounting)		UL2108 Class 2, CE-EMC	
Warranty	3 Years		5 Years	
Wire Legend				



FloppyFlex[®] F22 A/E/D

FACTORY MOLDED F22 CONNECTORS IP67 PVC OR IP68 SILICONE

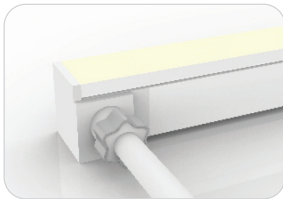
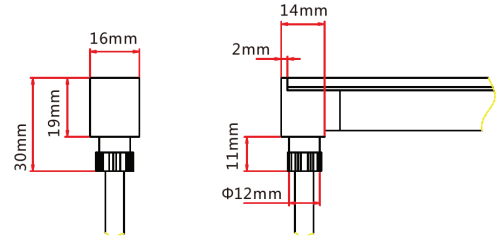


FIREFLY LIGHTING
 Phone : +61 7 3254 4333
 Email : sales@fireflylighting.com.au
 Address : 9/29 Links Ave North, Eagle Farm.
 Brisbane QLD 4009 Australia
www.fireflylighting.com.au



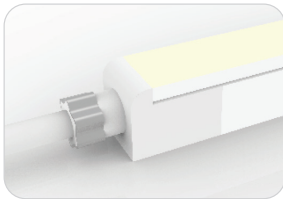
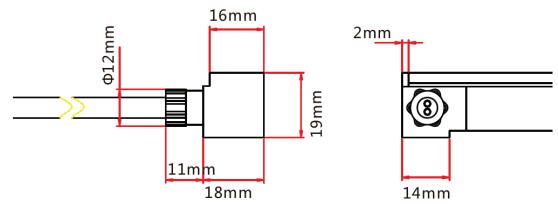
Molded Bottom Entry Connection

Connects FloppyFlex F22 to power supply with pre-installed end feed cable, IP67.
 Cable length available in 0.3 m, 1 m, 3 m, 5 m, 10 m.



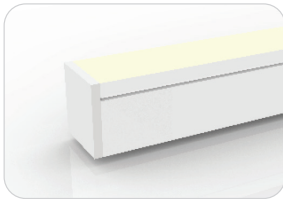
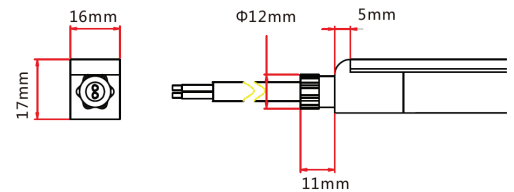
Molded Side Entry Connection

Connects FloppyFlex F22 to power supply with pre-installed side feed cable, IP67.
 Cable length available in 0.3 m, 1 m, 3 m, 5 m, 10 m.



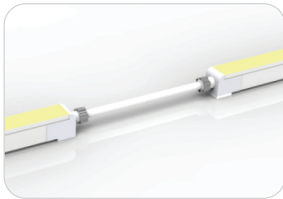
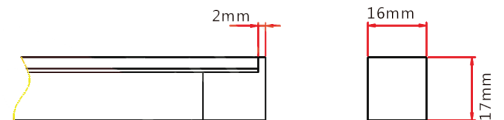
Molded End Entry Connection

Connects FloppyFlex F22 to power supply with pre-installed end feed cable, IP67.
 Cable length available in 0.3 m, 1 m, 3 m, 5 m, 10 m.



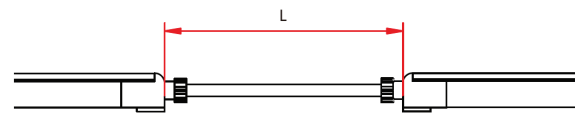
Molded End Cap

Pre-installed termination protection of FloppyFlex F22, IP67.



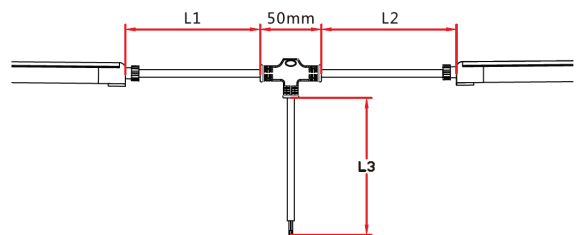
Molded End Entry Connection

Connects two pieces of FloppyFlex F22 together with a flexible cable, IP67.
 Cable length available in 0.3 - 1 m.
 Maximum 8 jumpers per 20 m
 Maximum 4 jumpers per 10 m



Molded T-Feed Connection

Connects two pieces of FloppyFlex F22 together with powered T-joint, IP67.
 L1 and L2 length available in 0.15-0.5 m.
 L3 length available in 0.3 - 1 m
 Maximum 8 T-Feeds per 20 m
 Maximum 4 T-Feeds per 10 m



FloppyFlex[®] F22 A/E/D

FACTORY DOUBLE MOLDED F22 CONNECTORS IP68 PVC ONLY



FIREFLY LIGHTING

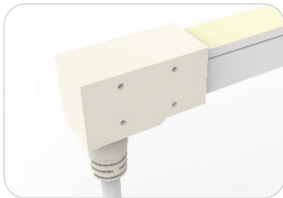
Phone : +61 7 3254 4333

Email : sales@fireflylighting.com.au

Address : 9/29 Links Ave North, Eagle Farm.

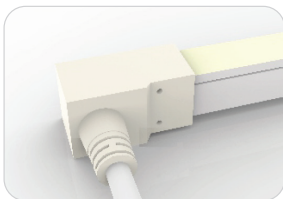
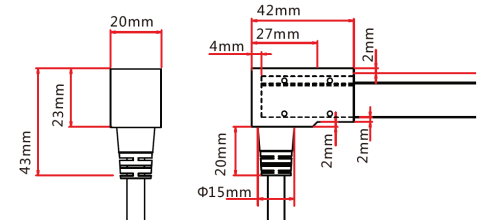
Brisbane QLD 4009 Australia

www.fireflylighting.com.au



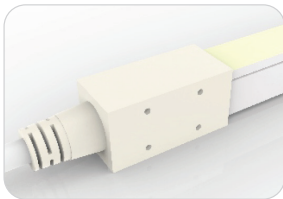
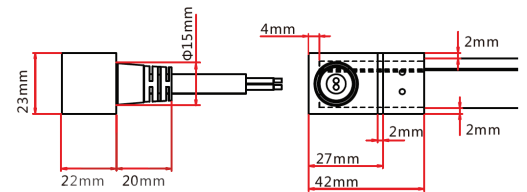
Double-Molded Bottom Entry Connection

Connects FloppyFlex F22 to power supply with pre-installed end feed cable, IP68.
Cable length available in 0.3 m, 1 m, 3 m, 5 m, 10 m.



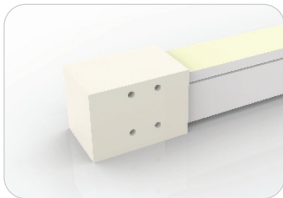
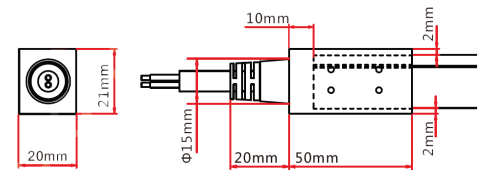
Double-Molded Side Entry Connection

Connects FloppyFlex F22 to power supply with pre-installed side feed cable, IP68.
Cable length available in 0.3 m, 1 m, 3 m, 5 m, 10 m.



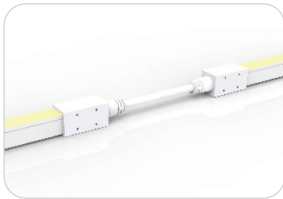
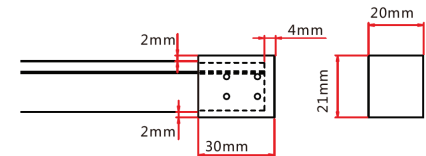
Double-Molded End Entry Connection

Connects FloppyFlex F22 to power supply with pre-installed end feed cable, IP68.
Cable length available in 0.3 m, 1 m, 3 m, 5 m, 10 m.



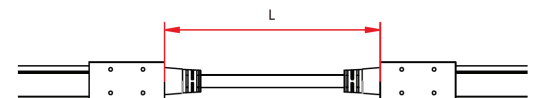
Double-Molded End Cap

Pre-installed termination protection of FloppyFlex F22, IP68.



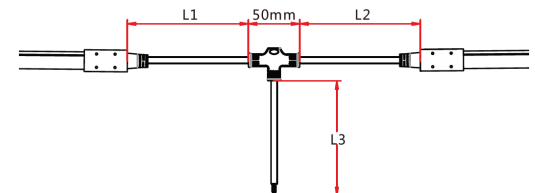
Double-Molded End Entry Connection

Connects two pieces of FloppyFlex F22 together with a flexible cable, IP68.
Cable length available in 0.3 - 1 m.
Maximum 8 jumpers per 20 m
Maximum 4 jumpers per 10 m



Double-Molded T-Feed Connection

Connects two pieces of FloppyFlex F22 together with powered T-joint, IP68.
L1 and L2 length available in 0.15-0.5 m.
L3 length available in 0.3 - 1 m
Maximum 8 T-Feeds per 20 m
Maximum 4 T-Feeds per 10 m



FloppyFlex® F22 A/E/D

MINI TOOL KIT ASSEMBLY TOOLS



FIREFLY LIGHTING
Phone : +61 7 3254 4333
Email : sales@fireflylighting.com.au
Address : 9/29 Links Ave North, Eagle Farm.
Brisbane QLD 4009 Australia
www.fireflylighting.com.au

Mini Tool Kit

The FloppyFlex Mini Tool Kit includes the tools needed to properly cut and terminate FloppyFlex LED Neon with EZ-Connect field-installable connectors. Correct installation ensures proper electrical contact, IP rating integrity, and warranty compliance.

Includes cutter, insertion spreader and grippers.

We recommend using these tools for optimum installation results and reduced risk of damage to the product.



FloppyFlex® F22 A/E/D

DRIVERS



FIREFLY LIGHTING
 Phone : +61 7 3254 4333
 Email : sales@fireflylighting.com.au
 Address : 9/29 Links Ave North, Eagle Farm.
 Brisbane QLD 4009 Australia
www.fireflylighting.com.au

Mean Well 24 VDC LED Drivers

- High efficiency 24VDC LED drivers in DIN Rail and stand-alone with multiple wattage configurations
- IP-rated units available
- Fixed or dimmable output. Dimming available via 1-10VDC, 10V PWM signal, resistance, or built-in potentiometer



L-TECH 4 channel DMX Decoder

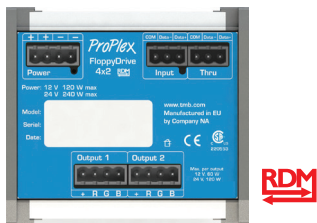
- DMX dimming for 24V LED Tapes, Neons, and other low voltage systems of all types. Perfect for FloppyFlex
- One 24V 5-wire output
- Addressing via RDM or built in DIP switches
- Pluggable Terminal Block (PTB) screw terminals for bare-wire, installation flexibility
- Realises 0-100% dimming or different lighting effects.
- Works with DIM, CT, RGB, RGBW LEDs



FloppyDrive DIN Rail Mount

- DMX dimming for 24V LED Tapes, Neons, and other low voltage systems of all types. Perfect for FloppyFlex
- Two 24V 2-, 3-, 4-, or 5-wire outputs
- Addressing, monitoring and reporting of all functions, via RDM
- 1200Hz flicker-free refresh rate
- Pluggable Terminal Block (PTB) screw terminals for bare-wire, installation flexibility

More information and full specification sheets at <https://tmb.com/proplex-floppydrives>



L-TECH 3 channel DMX Decoder

- DMX dimming for 24V LED Tapes, Neons, and other low voltage systems of all types. Perfect for FloppyFlex
- One 24V 4-wire output
- Addressing via RDM or built in DIP switches
- Pluggable Terminal Block (PTB) screw terminals for bare-wire, installation flexibility
- Realises 0-100% dimming or different lighting effects.
- Works with DIM, CT, RGB LEDs



FloppyFlex® F22 A/E/D

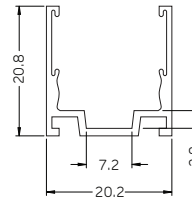
ALUMINIUM CHANNEL SELF LOCKING



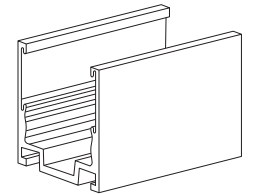
FIREFLY LIGHTING
Phone : +61 7 3254 4333
Email : sales@fireflylighting.com.au
Address : 9/29 Links Ave North, Eagle Farm.
 Brisbane QLD 4009 Australia
www.fireflylighting.com.au



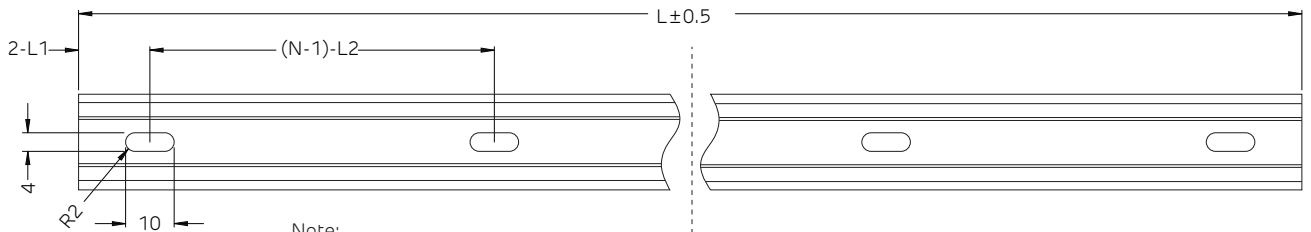
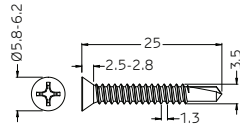
Versatile self-locking profile can be used to mount FloppyFlex F22 LED neon in any orientation including overhead at any angle. Extruded 6063 aluminum construction with elastic serrated grip tape hold the FloppyFlex neon firmly through varying temperatures of -20 to +70 °C.



Tolerance: ±0.2 mm



Dimensions in millimeters



Note:

1. 2-L1 refers to two of symmetric L1 in each piece of profile.
 2. (N-1)-L2 refers to (N minus one) of symmetric L2 in each piece of profile.
- "N" hereby stands for its corresponding "Hole Number" in the table below.

Part Number	Length	L1	L2	Slotted Hole	Number of Holes
LNCH-F22-A1-02	20 mm	10 mm	N/A	4x10 mm	1
LNCH-F22-A1-05	500 mm	50 mm	200 mm	4x10 mm	3
LNCH-F22-A1-1	1000 mm	100 mm	200 mm	4x10 mm	5
LNCH-F22-A1-2	2000 mm	100 mm	200 mm	4x10 mm	10



FloppyFlex® F22 A/E/D

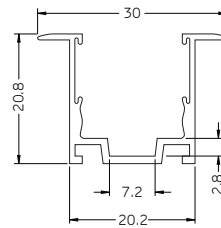
FLANGE ALUMINIUM CHANNEL RECESSED SELF LOCKING



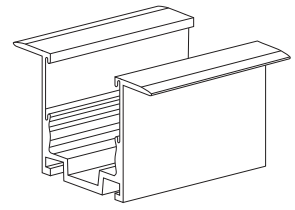
FIREFLY LIGHTING
 Phone : +61 7 3254 4333
 Email : sales@fireflylighting.com.au
 Address : 9/29 Links Ave North, Eagle Farm.
 Brisbane QLD 4009 Australia
www.fireflylighting.com.au



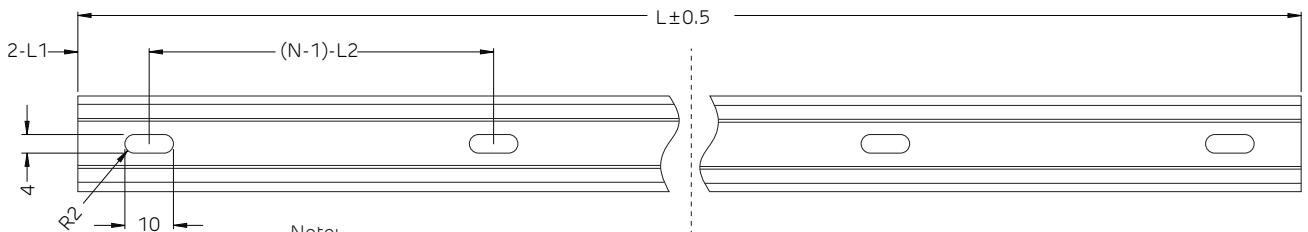
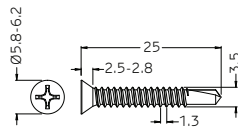
Versatile self-locking profile can be used to mount recessed FloppyFlex F22 LED neon in any orientation including overhead at any angle. Extruded 6063 aluminum construction with elastic serrated grip tape hold the FloppyFlex neon firmly through varying temperatures of -20 to +70 °C.



Tolerance: ±0.2 mm



Dimensions in millimeters



Note:

1. 2-L1 refers to two of symmetric L1 in each piece of profile.
 2. (N-1)-L2 refers to (N minus one) of symmetric L2 in each piece of profile.
- "N" hereby stands for its corresponding "Hole Number" in the table below.

Part Number	Length	L1	L2	Slotted Hole	Number of Holes
LNCH-F22-A3-02	20 mm	10 mm	N/A	4x10 mm	1
LNCH-F22-A3-05	500 mm	50 mm	200 mm	4x10 mm	3
LNCH-F22-A3-1	1000 mm	100 mm	200 mm	4x10 mm	5
LNCH-F22-A3-2	2000 mm	100 mm	200 mm	4x10 mm	10



FloppyFlex® F22 A/E/D

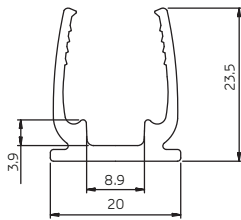
THICKENED PLASTIC CHANNEL



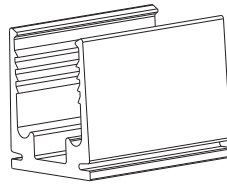
FIREFLY LIGHTING
 Phone : +61 7 3254 4333
 Email : sales@fireflylighting.com.au
 Address : 9/29 Links Ave North, Eagle Farm.
 Brisbane QLD 4009 Australia
www.fireflylighting.com.au



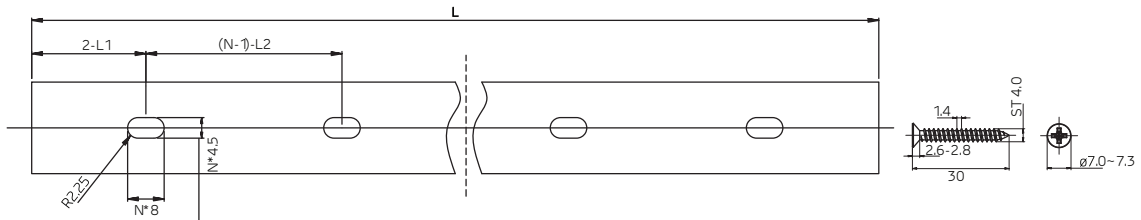
Non-metallic profile specially designed for FloppyFlex F22 LED neon in fully-submersed underwater applications up to 2 meters in depth. Thickened Polycarbonate construction to 3mm thickness. Excellent corrosion and fracture resistance properties. Can be mounted in any orientation including overhead at any angle.



Tolerance: ±0.3mm



Dimensions in mm



Note:

1. 2-L1 refers to two of symmetric L1 in each piece of profile.
 2. (N-1)-L2 refers to (N minus one) of symmetric L2 in each piece of profile.
- "N" hereby stands for its corresponding "Hole Number" in the table below.

Part Number	Length	L1	L2	Slotted Hole	Number of Holes
LNCH-F22-P1-35	35 mm	17.5 mm	N/A	4.5x8 mm	1
LNCH-F22-P1-05	500 mm	50 mm	200 mm	4.5x8 mm	3
LNCH-F22-P1-1	1000 mm	100 mm	200 mm	4.5x8 mm	5
LNCH-F22-P1-2	2000 mm	100 mm	200 mm	4.5x8 mm	10

